

For Research Use Only

# PSMF1 Polyclonal antibody

Catalog Number: 12941-1-AP

Featured Product

1 Publications



## Basic Information

**Catalog Number:**

12941-1-AP

**Size:**

900 µg/ml

**Source:**

Rabbit

**Isotype:**

IgG

**Immunogen Catalog Number:**

AG4011

**GenBank Accession Number:**

BC029836

**GeneID (NCBI):**

9491

**UNIPROT ID:**

Q92530

**Full Name:**

proteasome (prosome, macropain)  
inhibitor subunit 1 (PI31)

**Calculated MW:**

30 kDa

**Observed MW:**

30 kDa

**Purification Method:**

Antigen affinity purification

**Recommended Dilutions:**

WB 1:500-1:1000

## Applications

**Tested Applications:**

WB, ELISA

**Cited Applications:**

WB

**Species Specificity:**

human, mouse, rat

**Cited Species:**

human

**Positive Controls:**

WB : HEK-293 cells, human kidney tissue, human heart tissue, Jurkat cells, Neuro-2a cells

## Background Information

PSMF1 is also named as PI31 (proteasome (prosome, macropain) inhibitor subunit 1) and belongs to proteasome inhibitor PI31 family. PI31, which localizes at the nuclear envelope/endoplasmic reticulum membrane, acts as a selective modulator of the proteasome-mediated steps in MHC class I antigen processing (PMID:18495667). PI31 does not inhibit cell-surface transport of glycoproteins in general and it may serve to control immunoproteasome formation and may thereby maintain an intracellular balance between constitutive and immunoproteasomes (PMID:12374861).

## Notable Publications

Author	Pubmed ID	Journal	Application
Hongli An	28031328	Mol Cell Biol	WB

## Storage

**Storage:**

Store at -20°C. Stable for one year after shipment.

**Storage Buffer:**

PBS with 0.02% sodium azide and 50% glycerol pH 7.3.

Aliquoting is unnecessary for -20°C storage

For technical support and original validation data for this product please contact:

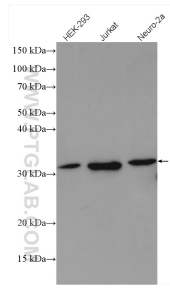
T: 4006900926

E: Proteintech-CN@ptglab.com

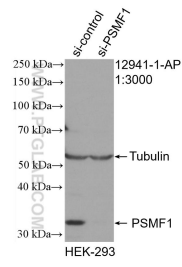
W: ptgcn.com

This product is exclusively available under Proteintech Group brand and is not available to purchase from any other manufacturer.

## Selected Validation Data



Various lysates were subjected to SDS PAGE followed by western blot with 12941-1-AP (PSMF1 antibody) at dilution of 1:500 incubated at room temperature for 1.5 hours.



WB result of PSMF1 antibody (12941-1-AP; 1:3000; incubated at room temperature for 1.5 hours) with sh-Control and sh-PSMF1 transfected HEK-293 cells.