

For Research Use Only

CLASP2 Polyclonal antibody

Catalog Number: 12942-1-AP

Featured Product

1 Publications



Basic Information

Catalog Number:

12942-1-AP

Size:

400 µg/ml

Source:

Rabbit

Isotype:

IgG

Immunogen Catalog Number:

AG4012

GenBank Accession Number:

BC029035

GeneID (NCBI):

23122

UNIPROT ID:

O75122

Full Name:

cytoplasmic linker associated protein

2

Calculated MW:

1294 aa, 141 kDa

Observed MW:

140-160 kDa

Purification Method:

Antigen affinity purification

Recommended Dilutions:

WB 1:500-1:2000

IHC 1:50-1:500

IF-P 1:50-1:500

IF/ICC 1:50-1:500

Applications

Tested Applications:

WB, IHC, IF/ICC, IF-P, ELISA

Cited Applications:

WB

Species Specificity:

human, mouse

Cited Species:

mouse

Note-IHC: suggested antigen retrieval with TE buffer pH 9.0; (*) Alternatively, antigen retrieval may be performed with citrate buffer pH 6.0

Positive Controls:

WB : human brain tissue, HEK-293 cells

IHC : mouse brain tissue,

IF-P : mouse brain tissue,

IF/ICC : HepG2 cells,

Background Information

CLASP2 (CLIP-associating protein 2) is a brain specific protein belongs to CLASP family. CLASP1 and CLASP2 regulate microtubule plus-end dynamics in brain cortex. CLASP2 is required for the orientation of stabilized microtubules toward the leading edge. It may act at the cell cortex to enhance the frequency of rescue of depolymerizing microtubules by attaching their plus-ends to cortical platforms. Phosphorylation of CLASP2 by GSK3B may negatively regulate binding to microtubule lattices in lamella.

Notable Publications

Author	Pubmed ID	Journal	Application
Matsumoto Takumi T	23239117	J Bone Miner Res	WB

Storage

Storage:

Store at -20°C. Stable for one year after shipment.

Storage Buffer:

PBS with 0.02% sodium azide and 50% glycerol pH 7.3.

Aliquoting is unnecessary for -20°C storage

For technical support and original validation data for this product please contact:

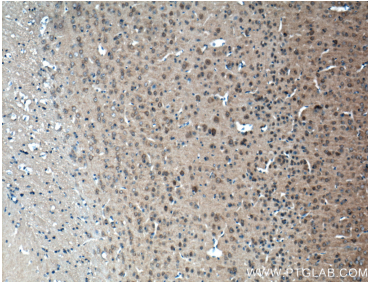
T: 4006900926

E: Proteintech-CN@ptglab.com

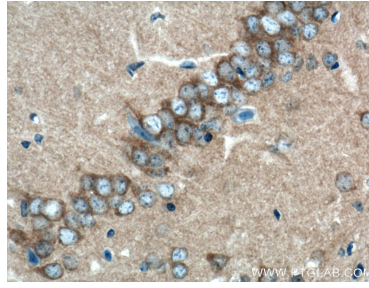
W: ptgcn.com

This product is exclusively available under Proteintech Group brand and is not available to purchase from any other manufacturer.

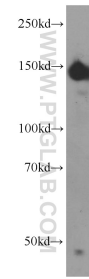
Selected Validation Data



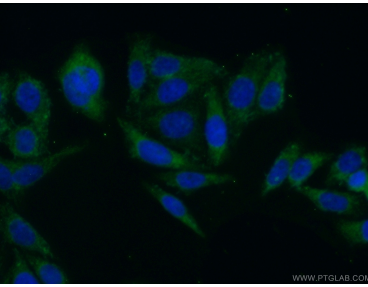
Immunohistochemical analysis of paraffin-embedded mouse brain tissue slide using 12942-1-AP (CLASP2 antibody) at dilution of 1:200 (under 10x lens). Heat mediated antigen retrieval with Tris-EDTA buffer (pH 9.0).



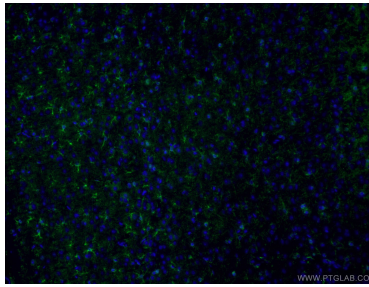
Immunohistochemical analysis of paraffin-embedded mouse brain tissue slide using 12942-1-AP (CLASP2 antibody) at dilution of 1:200 (under 40x lens). Heat mediated antigen retrieval with Tris-EDTA buffer (pH 9.0).



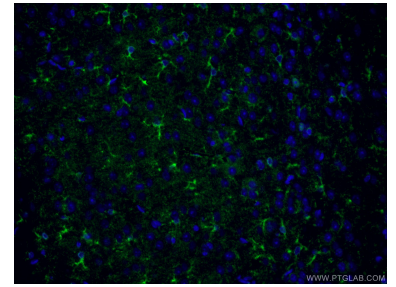
human brain tissue were subjected to SDS PAGE followed by western blot with 12942-1-AP (CLASP2 antibody) at dilution of 1:500 incubated at room temperature for 1.5 hours.



Immunofluorescent analysis of HepG2 cells using 12942-1-AP (CLASP2 antibody) at dilution of 1:50 and Alexa Fluor 488-conjugated AffiniPure Goat Anti-Rabbit IgG(H+L).



Immunofluorescent analysis of (4% PFA) fixed mouse brain tissue using 12942-1-AP (CLASP2 antibody) at dilution of 1:50 and Alexa Fluor 488-conjugated AffiniPure Goat Anti-Rabbit IgG(H+L).



Immunofluorescent analysis of (4% PFA) fixed mouse brain tissue using 12942-1-AP (CLASP2 antibody) at dilution of 1:50 and Alexa Fluor 488-conjugated AffiniPure Goat Anti-Rabbit IgG(H+L).