

For Research Use Only

# PPM1A Polyclonal antibody

Catalog Number: 12961-1-AP **3 Publications**



## Basic Information

<b>Catalog Number:</b> 12961-1-AP	<b>GenBank Accession Number:</b> BC026691	<b>Purification Method:</b> Antigen affinity purification
<b>Size:</b> 900 µg/ml	<b>GeneID (NCBI):</b> 5494	<b>Recommended Dilutions:</b> WB 1:1000-1:8000 IHC 1:500-1:2000
<b>Source:</b> Rabbit	<b>UNIPROT ID:</b> P35813	
<b>Isotype:</b> IgG	<b>Full Name:</b> protein phosphatase 1A (formerly 2C), magnesium-dependent, alpha isoform	
<b>Immunogen Catalog Number:</b> AG3645	<b>Calculated MW:</b> 382 aa, 42 kDa	
	<b>Observed MW:</b> 42 kDa	

## Applications

### Tested Applications:

IHC, WB, ELISA

### Cited Applications:

WB, IF, Cell treatment

### Species Specificity:

human, mouse, rat

### Cited Species:

mouse, rat

**Note-IHC: suggested antigen retrieval with TE buffer pH 9.0; (\*) Alternatively, antigen retrieval may be performed with citrate buffer pH 6.0**

### Positive Controls:

**WB:** Jurkat cells, HepG2 cells, human liver tissue, rat kidney tissue, mouse kidney tissue, K-562 cells

**IHC:** human breast cancer tissue, human urothelial carcinoma tissue

## Background Information

PPM1A (Protein phosphatase 1A) is also named as PPPM1A and belongs to the PP2C family. It is a serine/threonine protein phosphatase that is essential for regulating cellular stress responses in eukaryotes. PPM1A plays an important role in tumor suppression and that it negatively controls many signaling pathways which are critical for trophoblast invasion (PMID:19404668). This protein distributes in both the cytoplasm and nucleus of mammalian cells (PMID:9003755). It has 2 isoforms produced by alternative splicing.

## Notable Publications

Author	Pubmed ID	Journal	Application
Haibin Tian	36185374	iScience	IF
Aozora Nagaoka	35491170	Biol Pharm Bull	WB
Katyayane Neopane	36543129	Cell Rep	Cell treatment

## Storage

### Storage:

Store at -20°C. Stable for one year after shipment.

### Storage Buffer:

PBS with 0.02% sodium azide and 50% glycerol pH 7.3.

Aliquoting is unnecessary for -20°C storage

For technical support and original validation data for this product please contact:

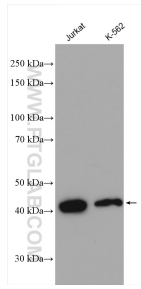
T: 4006900926

E: Proteintech-CN@ptglab.com

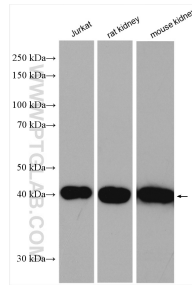
W: ptgcn.com

**This product is exclusively available under Proteintech Group brand and is not available to purchase from any other manufacturer.**

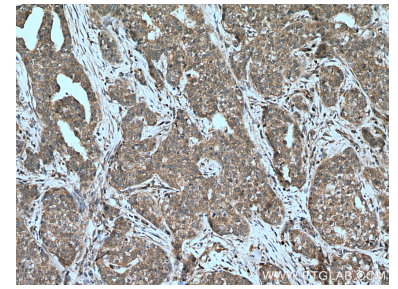
## Selected Validation Data



Various lysates were subjected to SDS PAGE followed by western blot with 12961-1-AP (PPM1A antibody) at dilution of 1:4000 incubated at room temperature for 1.5 hours.



Various lysates were subjected to SDS PAGE followed by western blot with 12961-1-AP (PPM1A antibody) at dilution of 1:2000 incubated at room temperature for 1.5 hours.



Immunohistochemical analysis of paraffin-embedded human breast cancer tissue slide using 12961-1-AP (PPM1A antibody) at dilution of 1:1000 (under 10x lens). Heat mediated antigen retrieval with Tris-EDTA buffer (pH 9.0).