

For Research Use Only

# DOCK7 Polyclonal antibody

Catalog Number: 13000-1-AP **5 Publications**



## Basic Information

**Catalog Number:**

13000-1-AP

**Size:**

400 µg/ml

**Source:**

Rabbit

**Isotype:**

IgG

**Immunogen Catalog Number:**

AG3671

**GenBank Accession Number:**

BC016392

**GeneID (NCBI):**

85440

**UNIPROT ID:**

Q96N67

**Full Name:**

dedicator of cytokinesis 7

**Calculated MW:**

2109 aa, 239 kDa

**Observed MW:**

238-243 kDa

**Purification Method:**

Antigen affinity purification

**Recommended Dilutions:**

WB 1:5000-1:50000

IP 0.5-4.0 µg for 1.0-3.0 mg of total protein lysate

IF 1:50-1:500

## Applications

**Tested Applications:**

IF/ICC, IP, WB, ELISA

**Cited Applications:**

WB, IP, IF, ColP

**Species Specificity:**

human, mouse, rat

**Cited Species:**

human, mouse

**Positive Controls:**

**WB:** HEK-293T cells, mouse brain tissue, human brain tissue, mouse ovary tissue, Jurkat cells, HeLa cells, HepG2 cells, K-562 cells, rat brain tissue

**IP:** HeLa cells,

**IF:** HeLa cells,

## Background Information

DOCK 7 (dedicator of cytokinesis 7), also known as ZIR2, is a member of the DOCK180-related protein superfamily. Expressed mainly in neuronal cells, DOCK 7 is a guanine nucleotide exchange factor (GEF) for small GTPases, Rac1 and Cdc42, which are the major regulators of actin cytoskeleton. Multiple isoforms of DOCK 7 exist due to alternative splicing events. The DOCK 7 antibody (13000-1-AP) can recognize all the isoforms.

## Notable Publications

Author	Pubmed ID	Journal	Application
P V Ryder	23676666	Mol Biol Cell	WB
Gao Guo	35915159	Nat Cell Biol	WB
Weiwei Chen	38385857	Clin Transl Med	WB,IF

## Storage

**Storage:**

Store at -20°C. Stable for one year after shipment.

**Storage Buffer:**

PBS with 0.02% sodium azide and 50% glycerol pH 7.3.

Aliquoting is unnecessary for -20°C storage

For technical support and original validation data for this product please contact:

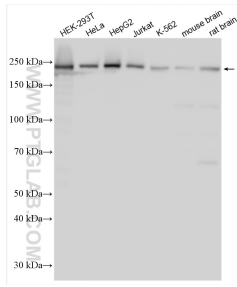
T: 4006900926

E: Proteintech-CN@ptglab.com

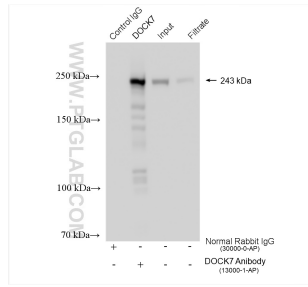
W: ptgcn.com

**This product is exclusively available under Proteintech Group brand and is not available to purchase from any other manufacturer.**

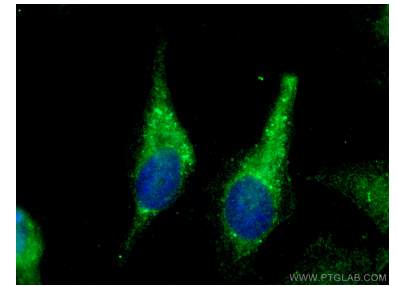
## Selected Validation Data



Various lysates were subjected to SDS PAGE followed by western blot with 13000-1-AP (DOCK7 antibody) at dilution of 1:12000 incubated at room temperature for 1.5 hours.



IP result of anti-DOCK7 (IP:13000-1-AP, 4ug; Detection:13000-1-AP 1:10000) with HeLa cells lysate 1280 ug.



Immunofluorescent analysis of (-20°C Methanol) fixed HeLa cells using DOCK7 antibody (13000-1-AP) at dilution of 1:200 and CoraLite@488-Conjugated AffiniPure Goat Anti-Rabbit IgG(H+L).