

For Research Use Only

# GNS Polyclonal antibody

Catalog Number: 13044-1-AP **1 Publications**



## Basic Information

<b>Catalog Number:</b> 13044-1-AP	<b>GenBank Accession Number:</b> BC012482	<b>Purification Method:</b> Antigen affinity purification
<b>Size:</b> 400 µg/ml	<b>GeneID (NCBI):</b> 2799	<b>Recommended Dilutions:</b> WB 1:500-1:3200 IHC 1:20-1:200 IF/ICC 1:50-1:500
<b>Source:</b> Rabbit	<b>UNIPROT ID:</b> P15586	
<b>Isotype:</b> IgG	<b>Full Name:</b> glucosamine (N-acetyl)-6-sulfatase	
<b>Immunogen Catalog Number:</b> AG3712	<b>Calculated MW:</b> 552 aa, 62 kDa	
	<b>Observed MW:</b> 94 kDa	

## Applications

<b>Tested Applications:</b> WB, IHC, IF/ICC, ELISA	<b>Positive Controls:</b> WB : PC-3 cells, HeLa cells IHC : human prostate cancer tissue, IF/ICC : PC-3 cells,
<b>Cited Applications:</b> WB	
<b>Species Specificity:</b> human, mouse, rat	
<b>Cited Species:</b> mouse	
<b>Note-IHC: suggested antigen retrieval with TE buffer pH 9.0; (*) Alternatively, antigen retrieval may be performed with citrate buffer pH 6.0</b>	

## Background Information

### Notable Publications

Author	Pubmed ID	Journal	Application
Jonathan Martínez-Fábregas	30559339	Nat Commun	WB

## Storage

**Storage:**  
Store at -20°C. Stable for one year after shipment.  
**Storage Buffer:**  
PBS with 0.02% sodium azide and 50% glycerol pH 7.3.  
Aliquoting is unnecessary for -20°C storage

For technical support and original validation data for this product please contact:

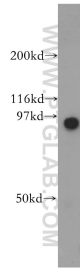
T: 4006900926

E: Proteintech-CN@ptglab.com

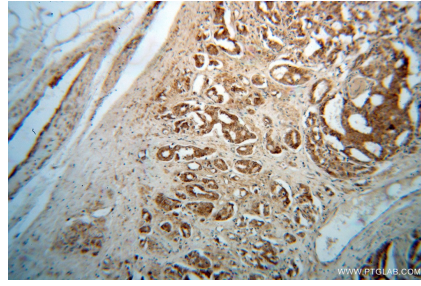
W: ptgcn.com

**This product is exclusively available under Proteintech Group brand and is not available to purchase from any other manufacturer.**

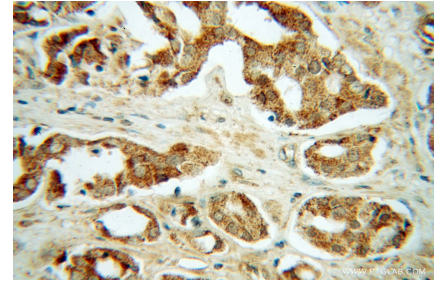
## Selected Validation Data



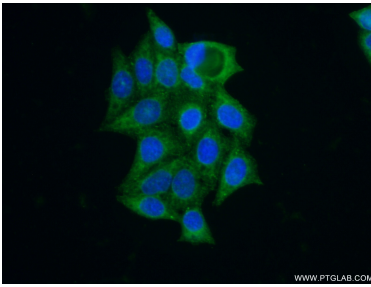
PC-3 cells were subjected to SDS PAGE followed by western blot with 13044-1-AP (GNS antibody) at dilution of 1:600 incubated at room temperature for 1.5 hours.



Immunohistochemical analysis of paraffin-embedded human prostate cancer using 13044-1-AP (GNS antibody) at dilution of 1:100 (under 10x lens).



Immunohistochemical analysis of paraffin-embedded human prostate cancer using 13044-1-AP (GNS antibody) at dilution of 1:100 (under 40x lens).



Immunofluorescent analysis of (-20°C Ethanol) fixed PC-3 cells using 13044-1-AP (GNS antibody) at dilution of 1:50 and Alexa Fluor 488-conjugated AffiniPure Goat Anti-Rabbit IgG(H+L).