

For Research Use Only

# PKD2L1 Polyclonal antibody

Catalog Number: 13117-2-AP

Featured Product

2 Publications



## Basic Information

Catalog Number:

13117-2-AP

Size:

500 µg/ml

Source:

Rabbit

Isotype:

IgG

Immunogen Catalog Number:

AG3807

GenBank Accession Number:

BC025665

GeneID (NCBI):

9033

UNIPROT ID:

Q9POL9

Full Name:

polycystic kidney disease 2-like 1

Calculated MW:

805 aa, 92 kDa

Observed MW:

75-85 kDa, 92 kDa

Purification Method:

Antigen affinity purification

Recommended Dilutions:

WB 1:500-1:1000

## Applications

Tested Applications:

WB, ELISA

Cited Applications:

WB, IF

Species Specificity:

human, mouse, rat

Cited Species:

mouse

Positive Controls:

WB : human liver tissue,

## Background Information

### Notable Publications

Author	Pubmed ID	Journal	Application
Liang Cao	36159391	Front Cell Neurosci	WB,IF
Emily Johnson	36691620	iScience	IF

## Storage

Storage:

Store at -20°C. Stable for one year after shipment.

Storage Buffer:

PBS with 0.02% sodium azide and 50% glycerol pH 7.3.

Aliquoting is unnecessary for -20°C storage

For technical support and original validation data for this product please contact:

T: 4006900926

E: Proteintech-CN@ptglab.com

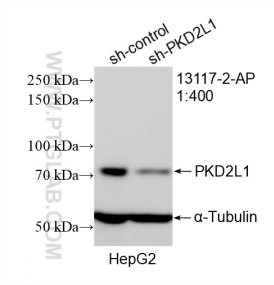
W: ptgcn.com

This product is exclusively available under Proteintech Group brand and is not available to purchase from any other manufacturer.

## Selected Validation Data



human liver tissue were subjected to SDS PAGE followed by western blot with 13117-2-AP (PKD2L1 antibody) at dilution of 1:500 incubated at room temperature for 1.5 hours.



WB result of PKD2L1 antibody (13117-2-AP; 1:400; incubated at room temperature for 1.5 hours) with sh-Control and sh-PKD2L1 transfected HepG2 cells.