

For Research Use Only

# MLF1IP Polyclonal antibody

Catalog Number: 13186-1-AP

Featured Product

1 Publications



## Basic Information

**Catalog Number:**

13186-1-AP

**Size:**

280 µg/ml

**Source:**

Rabbit

**Isotype:**

IgG

**Immunogen Catalog Number:**

AG3858

**GenBank Accession Number:**

BC031520

**GeneID (NCBI):**

79682

**UNIPROT ID:**

Q71F23

**Full Name:**

MLF1 interacting protein

**Calculated MW:**

418 aa, 48 kDa

**Observed MW:**

46-50 kDa, 60 kDa

**Purification Method:**

Antigen affinity purification

**Recommended Dilutions:**

WB 1:1000-1:8000

IHC 1:20-1:200

IF/ICC 1:10-1:100

## Applications

**Tested Applications:**

WB, IHC, IF/ICC, ELISA

**Cited Applications:**

WB, IHC

**Species Specificity:**

human, mouse, rat

**Cited Species:**

human

**Note-IHC: suggested antigen retrieval with TE buffer pH 9.0; (\*) Alternatively, antigen retrieval may be performed with citrate buffer pH 6.0**

**Positive Controls:**

**WB:** HepG2 cells, mouse liver tissue, mouse testis tissue, rat liver tissue

**IHC:** human testis tissue, human colon tissue, human gliomas tissue

**IF/ICC:** HepG2 cells,

## Background Information

MLF1IP, also named as CENPU, ICEN24, KLIP1 and PBIP1, belongs to the CENP-U/AME1 family. MLF1IP plays an important role in assembly of kinetochore proteins, mitotic progression and chromosome segregation. Moreover, MLF1IP has been shown to be involved in tumorigenesis in several types of cancer including glioblastoma, prostate cancer and luminal breast cancer (PMID: 27378428). MLF1IP has 3 isoforms with the molecular mass of 21, 38 and 47 kDa.

## Notable Publications

Author	Pubmed ID	Journal	Application
Yuting Xu	35122991	Cell Signal	WB,IHC

## Storage

**Storage:**

Store at -20°C. Stable for one year after shipment.

**Storage Buffer:**

PBS with 0.02% sodium azide and 50% glycerol pH 7.3.

Aliquoting is unnecessary for -20°C storage

For technical support and original validation data for this product please contact:

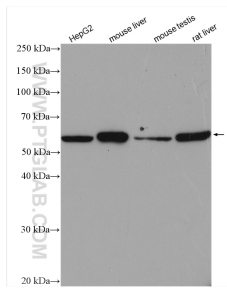
T: 4006900926

E: Proteintech-CN@ptglab.com

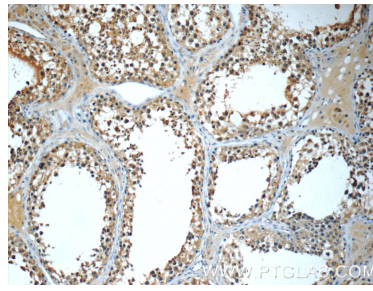
W: ptgcn.com

**This product is exclusively available under Proteintech Group brand and is not available to purchase from any other manufacturer.**

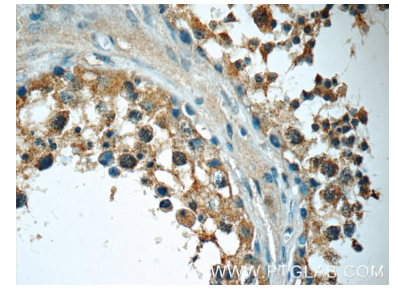
## Selected Validation Data



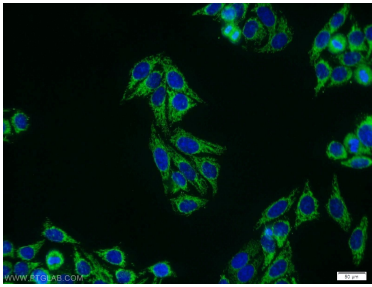
Various lysates were subjected to SDS PAGE followed by western blot with 13186-1-AP (MLF1P antibody) at dilution of 1:3000 incubated at room temperature for 1.5 hours.



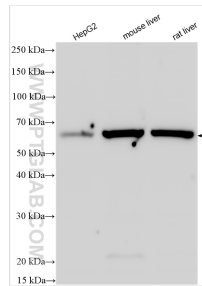
Immunohistochemical analysis of paraffin-embedded human testis tissue slide using 13186-1-AP (MLF1P Antibody) at dilution of 1:50 (under 10x lens).



Immunohistochemical analysis of paraffin-embedded human testis tissue slide using 13186-1-AP (MLF1P Antibody) at dilution of 1:50 (under 40x lens).



Immunofluorescent analysis of HepG2 cells using 13186-1-AP (MLF1P antibody) at dilution of 1:25 and Alexa Fluor 488-conjugated AffiniPure Goat Anti-Rabbit IgG(H+L).



Various lysates were subjected to SDS PAGE followed by western blot with 13186-1-AP (MLF1P antibody) at dilution of 1:4000 incubated at room temperature for 1.5 hours.