

For Research Use Only

# RAB25 Polyclonal antibody

Catalog Number: 13189-1-AP **1 Publications**



## Basic Information

<b>Catalog Number:</b> 13189-1-AP	<b>GenBank Accession Number:</b> BC033322	<b>Purification Method:</b> Antigen affinity purification
<b>Size:</b> 450 µg/ml	<b>GeneID (NCBI):</b> 57111	<b>Recommended Dilutions:</b> WB 1:500-1:1000 IHC 1:50-1:500
<b>Source:</b> Rabbit	<b>UNIPROT ID:</b> P57735	
<b>Isotype:</b> IgG	<b>Full Name:</b> RAB25, member RAS oncogene family	
<b>Immunogen Catalog Number:</b> AG3864	<b>Calculated MW:</b> 213 aa, 23 kDa	
	<b>Observed MW:</b> 24 kDa	

## Applications

<b>Tested Applications:</b> IHC, WB, ELISA	<b>Positive Controls:</b> WB : HT-29 cells, Caco-2 cells, T-47D cells
<b>Cited Applications:</b> IHC	<b>IHC :</b> human renal cell carcinoma tissue, human kidney tissue
<b>Species Specificity:</b> human	
<b>Cited Species:</b> human	
<b>Note-IHC: suggested antigen retrieval with TE buffer pH 9.0; (*) Alternatively, antigen retrieval may be performed with citrate buffer pH 6.0</b>	

## Background Information

### Notable Publications

Author	Pubmed ID	Journal	Application
Tianyu Zheng	35116410	Transl Cancer Res	IHC

## Storage

**Storage:**  
Store at -20°C. Stable for one year after shipment.  
**Storage Buffer:**  
PBS with 0.02% sodium azide and 50% glycerol pH 7.3.  
Aliquoting is unnecessary for -20°C storage

For technical support and original validation data for this product please contact:

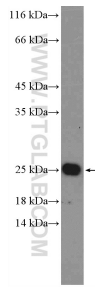
T: 4006900926

E: Proteintech-CN@ptglab.com

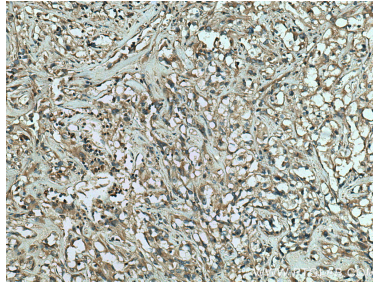
W: ptgcn.com

**This product is exclusively available under Proteintech Group brand and is not available to purchase from any other manufacturer.**

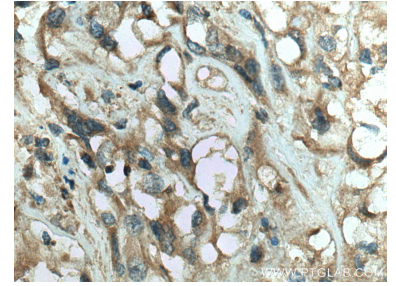
## Selected Validation Data



HT-29 cells were subjected to SDS PAGE followed by western blot with 13189-1-AP (RAB25 Antibody) at dilution of 1:600 incubated at room temperature for 1.5 hours.



Immunohistochemical analysis of paraffin-embedded human renal cell carcinoma tissue slide using 13189-1-AP (RAB25 antibody) at dilution of 1:200 (under 10x lens). Heat mediated antigen retrieval with Tris-EDTA buffer (pH 9.0).



Immunohistochemical analysis of paraffin-embedded human renal cell carcinoma tissue slide using 13189-1-AP (RAB25 antibody) at dilution of 1:200 (under 40x lens). Heat mediated antigen retrieval with Tris-EDTA buffer (pH 9.0).