

For Research Use Only

# ISCA2 Polyclonal antibody

Catalog Number: 13200-1-AP **2 Publications**



## Basic Information

**Catalog Number:**

13200-1-AP

**Size:**

700 µg/ml

**Source:**

Rabbit

**Isotype:**

IgG

**Immunogen Catalog Number:**

AG3941

**GenBank Accession Number:**

BC032893

**GeneID (NCBI):**

122961

**UNIPROT ID:**

Q86U28

**Full Name:**

iron-sulfur cluster assembly 2 homolog (S. cerevisiae)

**Calculated MW:**

154 aa, 16 kDa

**Observed MW:**

16 kDa

**Purification Method:**

Antigen affinity purification

**Recommended Dilutions:**

WB 1:500-1:1000

IHC 1:50-1:500

IF/ICC 1:50-1:500

## Applications

**Tested Applications:**

WB, IHC, IF/ICC, ELISA

**Cited Applications:**

WB, IHC

**Species Specificity:**

human

**Cited Species:**

human, mouse

**Note-IHC: suggested antigen retrieval with TE buffer pH 9.0; (\*) Alternatively, antigen retrieval may be performed with citrate buffer pH 6.0**

**Positive Controls:**

WB: A431 cells,

IHC: human liver cancer tissue, human breast cancer tissue

IF/ICC: A431 cells,

## Background Information

### Notable Publications

Author	Pubmed ID	Journal	Application
Ling Yang	36385109	Sci Rep	IHC
Yang Zhu	37578635	Neurosci Bull	WB

## Storage

**Storage:**

Store at -20°C. Stable for one year after shipment.

**Storage Buffer:**

PBS with 0.02% sodium azide and 50% glycerol pH 7.3.

Aliquoting is unnecessary for -20°C storage

For technical support and original validation data for this product please contact:

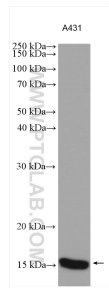
T: 4006900926

E: Proteintech-CN@ptglab.com

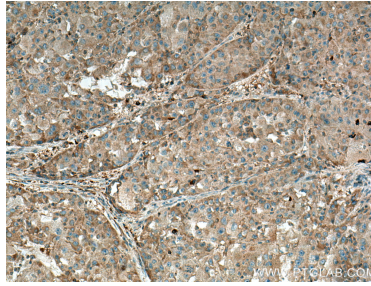
W: ptgcn.com

**This product is exclusively available under Proteintech Group brand and is not available to purchase from any other manufacturer.**

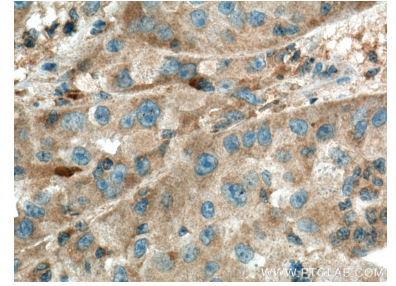
## Selected Validation Data



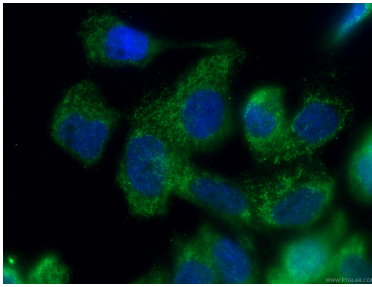
A431 cells were subjected to SDS PAGE followed by western blot with 13200-1-AP (ISCA2 antibody) at dilution of 1:600 incubated at room temperature for 1.5 hours.



Immunohistochemical analysis of paraffin-embedded human liver cancer tissue slide using 13200-1-AP (ISCA2 antibody) at dilution of 1:200 (under 10x lens). Heat mediated antigen retrieval with Tris-EDTA buffer (pH 9.0).



Immunohistochemical analysis of paraffin-embedded human liver cancer tissue slide using 13200-1-AP (ISCA2 antibody) at dilution of 1:200 (under 40x lens). Heat mediated antigen retrieval with Tris-EDTA buffer (pH 9.0).



Immunofluorescent analysis of (4% PFA) fixed A431 cells using 13200-1-AP (ISCA2 antibody), at dilution of 1:200 and CoraLite®488-Conjugated AffiniPure Goat Anti-Rabbit IgG(H+L).