

For Research Use Only

WFDC1 Polyclonal antibody

Catalog Number: 13204-1-AP



Basic Information

Catalog Number: 13204-1-AP	GenBank Accession Number: BC029159	Purification Method: Antigen affinity purification
Size: 1000 µg/ml	GeneID (NCBI): 58189	Recommended Dilutions: WB 1:500-1:1000 IHC 1:20-1:200
Source: Rabbit	UNIPROT ID: Q9HC57	
Isotype: IgG	Full Name: WAP four-disulfide core domain 1	
Immunogen Catalog Number: AG3960	Calculated MW: 220 aa, 24 kDa	
	Observed MW: 29 kDa	

Applications

Tested Applications:

IHC, WB, ELISA

Species Specificity:

human

Note-IHC: suggested antigen retrieval with TE buffer pH 9.0; (*) Alternatively, antigen retrieval may be performed with citrate buffer pH 6.0

Positive Controls:

WB : HEK-293 cells, PC-3 cells

IHC : human breast cancer tissue, human small intestine tissue

Background Information

Storage

Storage:

Store at -20°C. Stable for one year after shipment.

Storage Buffer:

PBS with 0.02% sodium azide and 50% glycerol pH 7.3.

Aliquoting is unnecessary for -20°C storage

For technical support and original validation data for this product please contact:

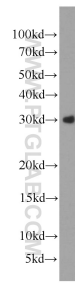
T: 4006900926

E: Proteintech-CN@ptglab.com

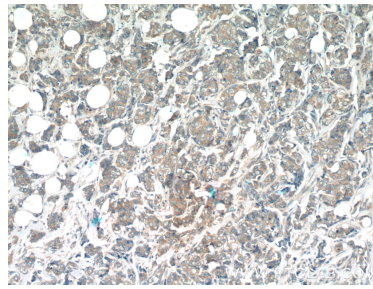
W: ptgcn.com

This product is exclusively available under Proteintech Group brand and is not available to purchase from any other manufacturer.

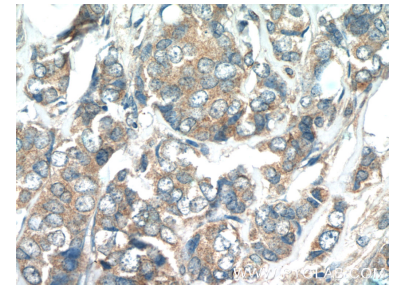
Selected Validation Data



HEK-293 cells were subjected to SDS PAGE followed by western blot with 13204-1-AP (WFDC1 antibody) at dilution of 1:1000 incubated at room temperature for 1.5 hours.



Immunohistochemical analysis of paraffin-embedded human breast cancer tissue slide using 13204-1-AP (WFDC1 Antibody) at dilution of 1:50 (under 10x lens).



Immunohistochemical analysis of paraffin-embedded human breast cancer tissue slide using 13204-1-AP (WFDC1 Antibody) at dilution of 1:50 (under 40x lens).