

For Research Use Only

# ARSB Polyclonal antibody

Catalog Number: 13227-1-AP

Featured Product

3 Publications



## Basic Information

Catalog Number:

13227-1-AP

Size:

240 µg/ml

Source:

Rabbit

Isotype:

IgG

Immunogen Catalog Number:

AG4083

GenBank Accession Number:

BC029051

GeneID (NCBI):

411

UNIPROT ID:

P15848

Full Name:

arylsulfatase B

Calculated MW:

413 aa, 46 kDa

Observed MW:

60 kDa, 44 kDa

Purification Method:

Antigen affinity purification

Recommended Dilutions:

WB 1:500-1:1000

IHC 1:20-1:200

## Applications

Tested Applications:

IHC, WB, ELISA

Cited Applications:

WB, IF

Species Specificity:

human, mouse, rat

Cited Species:

mouse

**Note-IHC: suggested antigen retrieval with TE buffer pH 9.0; (\*) Alternatively, antigen retrieval may be performed with citrate buffer pH 6.0**

Positive Controls:

WB : HepG2 cells,

IHC : human placenta tissue, human breast cancer tissue, human heart tissue

## Background Information

### Notable Publications

Author	Pubmed ID	Journal	Application
Que Wang	31612078	Oxid Med Cell Longev	WB
Matthew R Blake	35604022	Elife	WB
Kosuke Hosoba	36032399	Biochem Biophys Rep	WB,IF

## Storage

Storage:

Store at -20°C. Stable for one year after shipment.

Storage Buffer:

PBS with 0.02% sodium azide and 50% glycerol pH 7.3.

Aliquoting is unnecessary for -20°C storage

For technical support and original validation data for this product please contact:

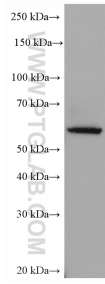
T: 4006900926

E: [Proteintech-CN@ptglab.com](mailto:Proteintech-CN@ptglab.com)

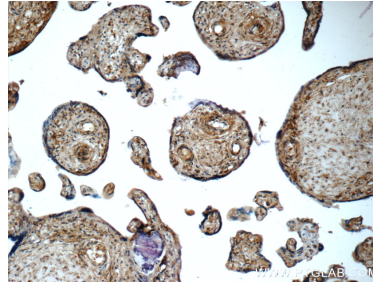
W: [ptgcn.com](http://ptgcn.com)

**This product is exclusively available under Proteintech Group brand and is not available to purchase from any other manufacturer.**

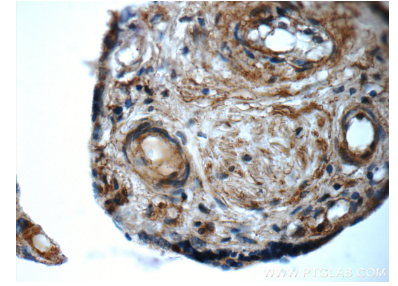
## Selected Validation Data



HepG2 cells were subjected to SDS PAGE followed by western blot with 13227-1-AP (ARSB antibody) at dilution of 1:500 incubated at room temperature for 1.5 hours.



Immunohistochemical analysis of paraffin-embedded human placenta tissue slide using 13227-1-AP (ARSB Antibody) at dilution of 1:50 (under 10x lens).



Immunohistochemical analysis of paraffin-embedded human placenta tissue slide using 13227-1-AP (ARSB Antibody) at dilution of 1:50 (under 40x lens).