

For Research Use Only

ATP6V1E2 Polyclonal antibody

Catalog Number: 13235-1-AP



Basic Information

Catalog Number:

13235-1-AP

Size:

400 µg/ml

Source:

Rabbit

Isotype:

IgG

Immunogen Catalog Number:

AG4088

GenBank Accession Number:

BC034808

GeneID (NCBI):

90423

UNIPROT ID:

Q96A05

Full Name:

ATPase, H⁺ transporting, lysosomal
31kDa, V1 subunit E2

Calculated MW:

226 aa, 26 kDa

Observed MW:

31-33 kDa

Purification Method:

Antigen affinity purification

Recommended Dilutions:

WB 1:500-1:1000

IP 0.5-4.0 µg for 1.0-3.0 mg of total
protein lysate

Applications

Tested Applications:

IP, WB, ELISA

Species Specificity:

human, mouse, rat

Positive Controls:

WB: mouse brain tissue, MCF-7 cells

IP: mouse brain tissue,

Background Information

Storage

Storage:

Store at -20°C. Stable for one year after shipment.

Storage Buffer:

PBS with 0.02% sodium azide and 50% glycerol pH 7.3.

Aliquoting is unnecessary for -20°C storage

For technical support and original validation data for this product please contact:

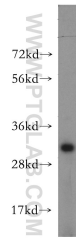
T: 4006900926

E: Proteintech-CN@ptglab.com

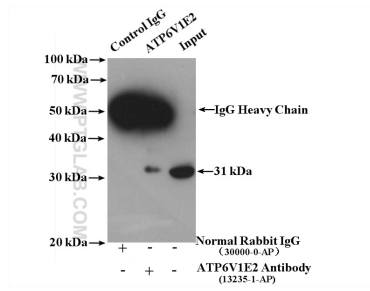
W: ptgcn.com

This product is exclusively available under Proteintech Group brand and is not available to purchase from any other manufacturer.

Selected Validation Data



mouse brain tissue were subjected to SDS PAGE followed by western blot with 13235-1-AP (ATP6V1E2 antibody) at dilution of 1:400 incubated at room temperature for 1.5 hours.



IP result of anti-ATP6V1E2 (IP:13235-1-AP, 4ug; Detection:13235-1-AP 1:1000) with mouse brain tissue lysate 3000 ug.