

For Research Use Only

# MLXIPL Polyclonal antibody

Catalog Number: 13256-1-AP **16 Publications**



## Basic Information

**Catalog Number:**

13256-1-AP

**Size:**

500 µg/ml

**Source:**

Rabbit

**Isotype:**

IgG

**Immunogen Catalog Number:**

AG3481

**GenBank Accession Number:**

BC012925

**GeneID (NCBI):**

51085

**UNIPROT ID:**

Q9NP71

**Full Name:**

MLX interacting protein-like

**Calculated MW:**

852 aa, 93 kDa

**Observed MW:**

65 kDa

**Purification Method:**

Antigen affinity purification

**Recommended Dilutions:**

WB 1:500-1:1000

IP 0.5-4.0 µg for 1.0-3.0 mg of total protein lysate

## Applications

**Tested Applications:**

WB, IP, ELISA

**Cited Applications:**

WB, IHC, IF

**Species Specificity:**

human, mouse, rat

**Cited Species:**

human, mouse

**Positive Controls:**

**WB:** mouse liver tissue, human liver tissue, HepG2 cells, HeLa cells, rat liver tissue

**IP:** HepG2 cells,

## Background Information

Carbohydrate response element-binding protein (ChREBP), also known as MLXIPL, is a glucose-responsive transcription factor that has a fundamental role in the glucose-mediated induction of genes involved in hepatic glycolysis and lipogenesis. Circulating blood glucose levels affect ChREBP activity in hepatocytes largely by post-translational mechanisms that include phosphorylation-dependent subcellular localization [PMID:21665952]. It enhances expression of the liver pyruvate kinase (LPK) gene and all lipogenic enzyme genes resulting in the conversion of excess dietary carbohydrate into triglycerides that can be stored as fat [PMID:15118080]. Molecular Weight of ChREBP splice variants: 62/78/91/93 kDa.

## Notable Publications

Author	Pubmed ID	Journal	Application
Yongyao Gao	35620283	Front Pharmacol	
Wenxi He	31076985	Dig Dis Sci	WB
Dandan Wang	33950051	Food Funct	WB

## Storage

**Storage:**

Store at -20°C. Stable for one year after shipment.

**Storage Buffer:**

PBS with 0.02% sodium azide and 50% glycerol pH 7.3.

Aliquoting is unnecessary for -20°C storage

For technical support and original validation data for this product please contact:

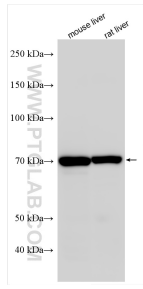
T: 4006900926

E: Proteintech-CN@ptglab.com

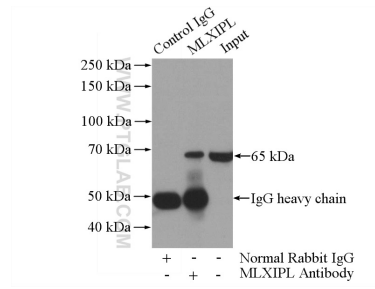
W: ptgcn.com

**This product is exclusively available under Proteintech Group brand and is not available to purchase from any other manufacturer.**

## Selected Validation Data



Various lysates were subjected to SDS PAGE followed by western blot with 13256-1-AP (MLXIPL antibody) at dilution of 1:800 incubated at room temperature for 1.5 hours.



IP result of anti-MLXIPL (IP:13256-1-AP, 4ug; Detection:13256-1-AP 1:1000) with HepG2 cells lysate 3600ug.