

For Research Use Only

DLX3 Polyclonal antibody

Catalog Number: 13261-3-AP **2 Publications**



Basic Information

| | | |
|--|--|--|
| Catalog Number: 13261-3-AP | GenBank Accession Number: BC028970 | Purification Method: Antigen affinity purification |
| Size: 600 µg/ml | GeneID (NCBI): 1747 | Recommended Dilutions: WB 1:500-1:3000 IHC 1:20-1:200 |
| Source: Rabbit | UNIPROT ID: O60479 | |
| Isotype: IgG | Full Name: distal-less homeobox 3 | |
| Immunogen Catalog Number: AG3865 | Calculated MW: 287 aa, 32 kDa | |
| | Observed MW: 32-38 kDa | |

Applications

| | |
|--|--|
| Tested Applications: IHC, WB, ELISA | Positive Controls: WB : JAR cells, mouse lung tissue, NCCIT cells IHC : human lung cancer tissue, |
| Cited Applications: CoIP, IF, IP, WB | |
| Species Specificity: human, mouse | |
| Cited Species: human, mouse | |
| Note-IHC: suggested antigen retrieval with TE buffer pH 9.0; (*) Alternatively, antigen retrieval may be performed with citrate buffer pH 6.0 | |

Background Information

Distal-less homeobox 3 (DLX3), a member of the Dlx family, plays a crucial role in epithelium, hair, bone, tooth and placental development. DLX3 is expressed during the calcium (Ca²⁺)-dependent epidermal differentiation process. The calculated molecular weight of DLX3 is 32 kDa. This antibody detects the 32-38 kDa protein in SDS-PAGE. (PMID: 31029881)

Notable Publications

| Author | Pubmed ID | Journal | Application |
|--------------|-----------|-------------|---------------|
| Yueh-Ho Chiu | 29743241 | J Biol Chem | WB,IP,CoIP,IF |
| Yue Zhang | 35922041 | Stem Cells | WB,CoIP |

Storage

Storage:
Store at -20°C. Stable for one year after shipment.
Storage Buffer:
PBS with 0.02% sodium azide and 50% glycerol pH 7.3.
Aliquoting is unnecessary for -20°C storage

For technical support and original validation data for this product please contact:

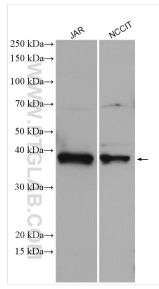
T: 4006900926

E: Proteintech-CN@ptglab.com

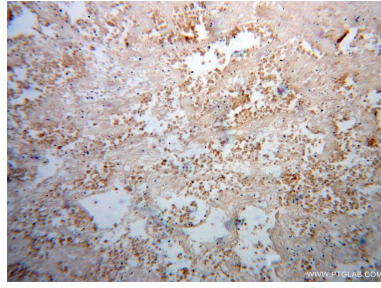
W: ptgcn.com

This product is exclusively available under Proteintech Group brand and is not available to purchase from any other manufacturer.

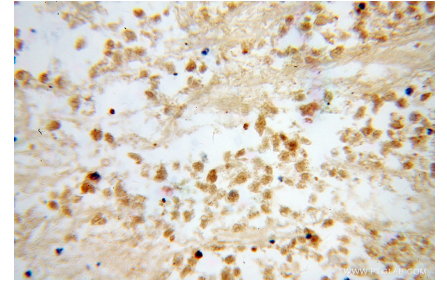
Selected Validation Data



Various lysates were subjected to SDS PAGE followed by western blot with 13261-3-AP (DLX3 antibody) at dilution of 1:1500 incubated at room temperature for 1.5 hours.



Immunohistochemical analysis of paraffin-embedded human lung cancer using 13261-3-AP (DLX3 antibody) at dilution of 1:100 (under 10x lens).



Immunohistochemical analysis of paraffin-embedded human lung cancer using 13261-3-AP (DLX3 antibody) at dilution of 1:100 (under 40x lens).