

For Research Use Only

CEND1 Polyclonal antibody

Catalog Number: 13280-1-AP **2 Publications**



Basic Information

Catalog Number: 13280-1-AP	GenBank Accession Number: BC034732	Purification Method: Antigen affinity purification
Size: 300 µg/ml	GeneID (NCBI): 51286	Recommended Dilutions: WB 1:500-1:1000 IHC 1:50-1:500 IF/ICC 1:50-1:500
Source: Rabbit	UNIPROT ID: Q8N111	
Isotype: IgG	Full Name: cell cycle exit and neuronal differentiation 1	
Immunogen Catalog Number: AG4024	Calculated MW: 149 aa, 15 kDa	
	Observed MW: 23 kDa	

Applications

Tested Applications: WB, IHC, IF/ICC, ELISA	Positive Controls: WB : mouse brain tissue, SH-SY5Y cells, human brain tissue, rat brain tissue IHC : mouse brain tissue, rat brain tissue IF/ICC : Neuro-2a cells,
Cited Applications: WB	
Species Specificity: human, mouse, rat	
Cited Species: rat, goat	
Note-IHC: suggested antigen retrieval with TE buffer pH 9.0; (*) Alternatively, antigen retrieval may be performed with citrate buffer pH 6.0	

Background Information

Cell cycle exit and neuronal differentiation 1 (CEND1) also known as BM88, is a neuronal protein associated in vivo with terminal neuron-generating divisions, marking the exit of proliferative cells from the cell cycle (PMID: 17971443). CEND1 expression is critical for the NEUROG2-driven reprogramming of astrocytes, suggesting the existence of a reciprocal feedback loop leading to neurogenesis (PMID: 26321141). CEND1 is an integral membrane protein composed of two 23-kDa polypeptide chains linked together by disulfide bridges.

Notable Publications

Author	Pubmed ID	Journal	Application
Xiaoying Huang	39401663	J Ethnopharmacol	WB
Zhimin Wang	38388551	Cell Death Discov	WB

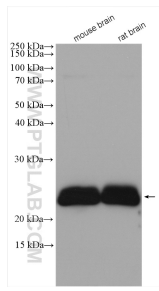
Storage

Storage:
Store at -20°C. Stable for one year after shipment.
Storage Buffer:
PBS with 0.02% sodium azide and 50% glycerol pH 7.3.
Aliquoting is unnecessary for -20°C storage

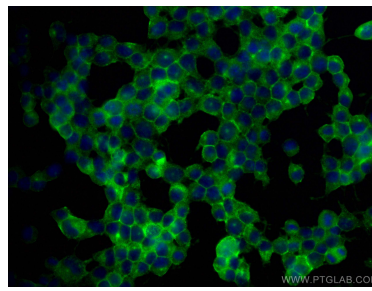
For technical support and original validation data for this product please contact:
T: 4006900926 E: Proteintech-CN@ptglab.com W: ptgcn.com

This product is exclusively available under Proteintech Group brand and is not available to purchase from any other manufacturer.

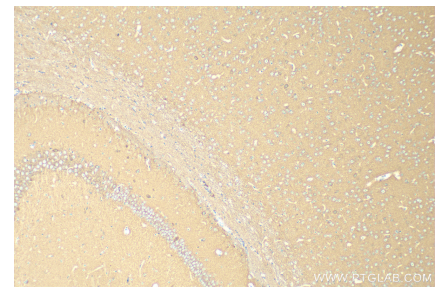
Selected Validation Data



Various lysates were subjected to SDS PAGE followed by western blot with 13280-1-AP (CEND1 antibody) at dilution of 1:600 incubated at room temperature for 1.5 hours.



Immunofluorescent analysis of (-20°C Ethanol) fixed Neuro-2a cells using CEND1 antibody (13280-1-AP) at dilution of 1:200 and CoraLite® 488-Conjugated Goat Anti-Rabbit IgG(H+L).



Immunohistochemical analysis of paraffin-embedded mouse brain tissue slide using 13280-1-AP (CEND1 antibody) at dilution of 1:200 (under 10x lens). Heat mediated antigen retrieval with Tris-EDTA buffer (pH 9.0).