

For Research Use Only

# GNA14 Polyclonal antibody

Catalog Number: 13350-1-AP



## Basic Information

<b>Catalog Number:</b> 13350-1-AP	<b>GenBank Accession Number:</b> BC027886	<b>Purification Method:</b> Antigen affinity purification
<b>Size:</b> 350 µg/ml	<b>GeneID (NCBI):</b> 9630	<b>Recommended Dilutions:</b> WB 1:200-1:1000 IHC 1:50-1:500 IF/ICC 1:50-1:500
<b>Source:</b> Rabbit	<b>UNIPROT ID:</b> O95837	
<b>Isotype:</b> IgG	<b>Full Name:</b> guanine nucleotide binding protein (G protein), alpha 14	
<b>Immunogen Catalog Number:</b> AG3930	<b>Calculated MW:</b> 355 aa, 42 kDa	
	<b>Observed MW:</b> 42 kDa	

## Applications

**Tested Applications:**  
WB, IHC, IF/ICC, ELISA

**Species Specificity:**  
human, mouse

**Note-IHC: suggested antigen retrieval with TE buffer pH 9.0; (\*) Alternatively, antigen retrieval may be performed with citrate buffer pH 6.0**

**Positive Controls:**

WB : mouse lung tissue,

IHC : human kidney tissue,

IF/ICC : HeLa cells, HepG2 cells

## Background Information

### Storage

**Storage:**

Store at -20°C. Stable for one year after shipment.

**Storage Buffer:**

PBS with 0.02% sodium azide and 50% glycerol pH 7.3.

Aliquoting is unnecessary for -20°C storage

For technical support and original validation data for this product please contact:

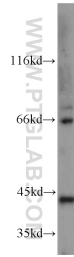
T: 4006900926

E: [Proteintech-CN@ptglab.com](mailto:Proteintech-CN@ptglab.com)

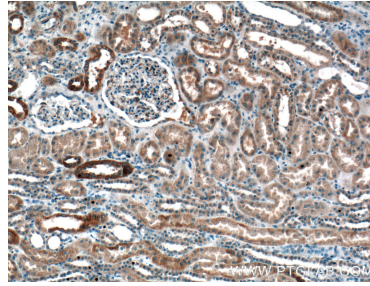
W: [ptgcn.com](http://ptgcn.com)

**This product is exclusively available under Proteintech Group brand and is not available to purchase from any other manufacturer.**

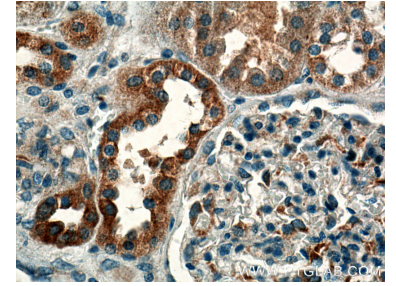
## Selected Validation Data



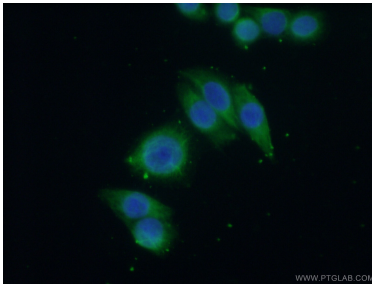
mouse lung tissue were subjected to SDS PAGE followed by western blot with 13350-1-AP (GNA14 antibody) at dilution of 1:600 incubated at room temperature for 1.5 hours.



Immunohistochemical analysis of paraffin-embedded human kidney tissue slide using 13350-1-AP (GNA14 Antibody) at dilution of 1:200 (under 10x lens).



Immunohistochemical analysis of paraffin-embedded human kidney tissue slide using 13350-1-AP (GNA14 Antibody) at dilution of 1:200 (under 40x lens).



Immunofluorescent analysis of (-20°C Ethanol) fixed HeLa cells using 13350-1-AP (GNA14 antibody) at dilution of 1:50 and Alexa Fluor 488-conjugated AffiniPure Goat Anti-Rabbit IgG(H+L).