

For Research Use Only

CCRL2 Polyclonal antibody

Catalog Number: 13387-1-AP **2 Publications**



Basic Information

Catalog Number: 13387-1-AP	GenBank Accession Number: BC025717	Purification Method: Antigen affinity purification
Size: 300 µg/ml	GeneID (NCBI): 9034	Recommended Dilutions: WB 1:500-1:2000
Source: Rabbit	UNIPROT ID: O00421	
Isotype: IgG	Full Name: chemokine (C-C motif) receptor-like 2	
Immunogen Catalog Number: AG4045	Calculated MW: 344 aa, 40 kDa	
	Observed MW: 47 kDa	

Applications

Tested Applications: WB, ELISA	Positive Controls: WB : A431 cells,
Cited Applications: WB	
Species Specificity: human	
Cited Species: rat	

Background Information

Chemokine CC motif receptor-like 2 (CCRL2) is a seven-transmembrane domain receptor that shares structural and functional similarities with the family of atypical chemokine receptors (ACKRs) (PMID: 28743719). CCRL2 does not appear to be a signaling receptor, but may have a role in modulating chemokine-triggered immune responses by capturing and internalizing CCL19 or by presenting RARRES2 ligand to CMKLR1, a functional signaling receptors. CCRL2 has been found on almost all hemopoietic cells, including monocytes, macrophages, polymorphonuclear neutrophils (PMNs), T cells, dendritic cells, natural killer cells, and CD34+ progenitor cells, with PMNs expressing the highest levels (PMID: 15188357). CCRL2 is also expressed by barrier cells, such as lymphatic and blood endothelial cells and bronchial and intestinal epithelial cells (PMID: 29056935).

Notable Publications

Author	Pubmed ID	Journal	Application
Chan Chen	32693388	Aging (Albany NY)	WB
Ayaho Omori	31965243	Pflugers Arch	WB

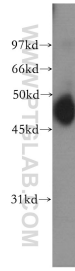
Storage

Storage:
Store at -20°C. Stable for one year after shipment.
Storage Buffer:
PBS with 0.02% sodium azide and 50% glycerol pH 7.3.
Aliquoting is unnecessary for -20°C storage

For technical support and original validation data for this product please contact:
T: 4006900926 E: Proteintech-CN@ptglab.com W: ptgcn.com

This product is exclusively available under Proteintech Group brand and is not available to purchase from any other manufacturer.

Selected Validation Data



A431 cells were subjected to SDS PAGE followed by western blot with 13387-1-AP (CCRL2 antibody) at dilution of 1:400 incubated at room temperature for 1.5 hours.