

For Research Use Only

CHD9 Polyclonal antibody

Catalog Number: 13402-1-AP

Featured Product

4 Publications



Basic Information

Catalog Number:

13402-1-AP

Size:

700 µg/ml

Source:

Rabbit

Isotype:

IgG

Immunogen Catalog Number:

AG4245

GenBank Accession Number:

BC033770

GeneID (NCBI):

80205

UNIPROT ID:

Q3L8U1

Full Name:

chromodomain helicase DNA binding

protein 9

Calculated MW:

2897 aa, 326 kDa

Observed MW:

330 kDa

Purification Method:

Antigen affinity purification

Recommended Dilutions:

WB 1:1000-1:4000

IHC 1:20-1:200

IF/ICC 1:50-1:500

Applications

Tested Applications:

WB, IHC, IF/ICC, ELISA

Cited Applications:

WB, IHC, ChIP

Species Specificity:

human

Cited Species:

human

Note-IHC: suggested antigen retrieval with TE buffer pH 9.0; (*) Alternatively, antigen retrieval may be performed with citrate buffer pH 6.0

Positive Controls:

WB : SGC-7901 cells, K-562 cells

IHC : human kidney tissue,

IF/ICC : HeLa cells,

Background Information

Notable Publications

Author	Pubmed ID	Journal	Application
Tomoyo Kawakubo-Yasukochi	28981169	Mol Carcinog	WB, IHC
Li Xu	30043858	Braz J Med Biol Res	IHC
Bo Guan	31949752	Int J Clin Exp Pathol	IHC

Storage

Storage:

Store at -20°C. Stable for one year after shipment.

Storage Buffer:

PBS with 0.02% sodium azide and 50% glycerol pH 7.3.

Aliquoting is unnecessary for -20°C storage

For technical support and original validation data for this product please contact:

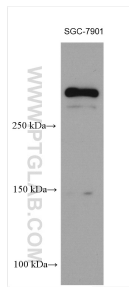
T: 4006900926

E: Proteintech-CN@ptglab.com

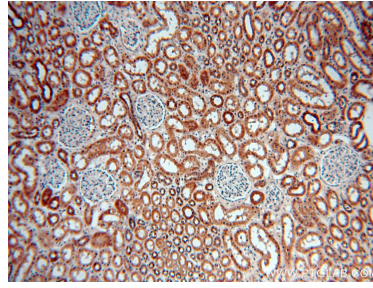
W: ptgcn.com

This product is exclusively available under Proteintech Group brand and is not available to purchase from any other manufacturer.

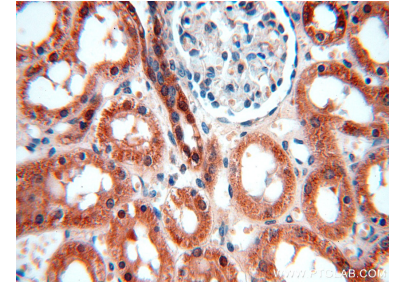
Selected Validation Data



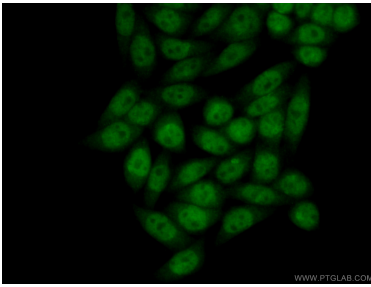
SGC-7901 cells were subjected to SDS PAGE followed by western blot with 13402-1-AP (CHD9 antibody) at dilution of 1:2000 incubated at room temperature for 1.5 hours.



Immunohistochemical analysis of paraffin-embedded human kidney using 13402-1-AP (CHD9 antibody) at dilution of 1:100 (under 10x lens).



Immunohistochemical analysis of paraffin-embedded human kidney using 13402-1-AP (CHD9 antibody) at dilution of 1:100 (under 40x lens).



Immunofluorescent analysis of (4% PFA) fixed HeLa cells using 13402-1-AP (CHD9 antibody) at dilution of 1:50 and Alexa Fluor 488-conjugated AffiniPure Goat Anti-Rabbit IgG(H+L).