

For Research Use Only

# CSRP1 Polyclonal antibody

Catalog Number: 13432-1-AP **1 Publications**



## Basic Information

<b>Catalog Number:</b> 13432-1-AP	<b>GenBank Accession Number:</b> BC032493	<b>Purification Method:</b> Antigen affinity purification
<b>Size:</b> 1000 ug/ml	<b>GeneID (NCBI):</b> 1465	<b>Recommended Dilutions:</b> WB 1:500-1:1000 IP 0.5-4.0 ug for 1.0-3.0 mg of total protein lysate IHC 1:50-1:500
<b>Source:</b> Rabbit	<b>UNIPROT ID:</b> P21291	
<b>Isotype:</b> IgG	<b>Full Name:</b> cysteine and glycine-rich protein 1	
<b>Immunogen Catalog Number:</b> AG4236	<b>Calculated MW:</b> 193 aa, 21 kDa	
	<b>Observed MW:</b> 21 kDa	

## Applications

<b>Tested Applications:</b> WB, IHC, IP, ELISA	<b>Positive Controls:</b> WB : human stomach tissue, IP : mouse stomach tissue, IHC : human normal colon, human lung cancer tissue
<b>Cited Applications:</b> WB	
<b>Species Specificity:</b> human, mouse, rat	
<b>Cited Species:</b> rat	
<b>Note-IHC: suggested antigen retrieval with TE buffer pH 9.0; (*) Alternatively, antigen retrieval may be performed with citrate buffer pH 6.0</b>	

## Background Information

### Notable Publications

Author	Pubmed ID	Journal	Application
Hui Ren	28983603	Mol. Med Rep	WB

## Storage

**Storage:**  
Store at -20°C. Stable for one year after shipment.  
**Storage Buffer:**  
PBS with 0.02% sodium azide and 50% glycerol pH 7.3.  
Aliquoting is unnecessary for -20°C storage

For technical support and original validation data for this product please contact:

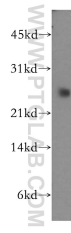
T: 4006900926

E: Proteintech-CN@ptglab.com

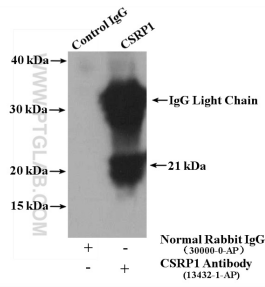
W: ptgcn.com

**This product is exclusively available under Proteintech Group brand and is not available to purchase from any other manufacturer.**

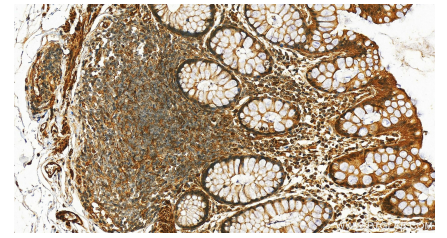
## Selected Validation Data



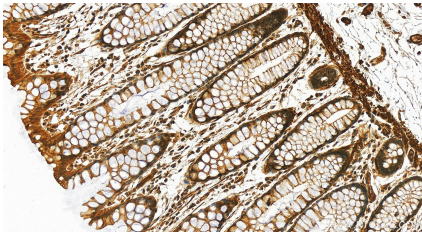
human stomach tissue were subjected to SDS PAGE followed by western blot with 13432-1-AP (CSR1 antibody) at dilution of 1:500 incubated at room temperature for 1.5 hours.



mouse stomach tissue were subjected to SDS PAGE followed by western blot with 13432-1-AP (CSR1 antibody) at dilution of 1:300.



Immunohistochemical analysis of paraffin-embedded human colon tissue slide using 13432-1-AP (CSR1 antibody) at dilution of 1:200 (under 20x lens). Heat mediated antigen retrieval with Tris-EDTA buffer (pH 9.0).



Immunohistochemical analysis of paraffin-embedded human colon tissue slide using 13432-1-AP (CSR1 antibody) at dilution of 1:200 (under 20x lens). Heat mediated antigen retrieval with Tris-EDTA buffer (pH 9.0).