

For Research Use Only

# GIMAP2 Polyclonal antibody

Catalog Number: 13445-1-AP



## Basic Information

<b>Catalog Number:</b> 13445-1-AP	<b>GenBank Accession Number:</b> BC032345	<b>Purification Method:</b> Antigen affinity purification
<b>Size:</b> 500 µg/ml	<b>GeneID (NCBI):</b> 26157	<b>Recommended Dilutions:</b> WB 1:500-1:1000 IHC 1:50-1:500
<b>Source:</b> Rabbit	<b>UNIPROT ID:</b> Q9UG22	
<b>Isotype:</b> IgG	<b>Full Name:</b> GTPase, IMAP family member 2	
<b>Immunogen Catalog Number:</b> AG4273	<b>Calculated MW:</b> 337 aa, 38 kDa	
	<b>Observed MW:</b> 28-40 kDa	

## Applications

<b>Tested Applications:</b> IHC, WB, ELISA	<b>Positive Controls:</b> WB : human heart tissue, human kidney tissue IHC : human heart tissue,
<b>Species Specificity:</b> human	
<b>Note-IHC: suggested antigen retrieval with TE buffer pH 9.0; (*) Alternatively, antigen retrieval may be performed with citrate buffer pH 6.0</b>	

## Background Information

This protein was not eliminated clearly. It belongs to GTPase of the immunity-associated protein family. One of its homologous protein, GIMAP1, runs as a 30kd protein in SDS-PAGE, lower than the calculated molecular weight. This antibody detected one 28kd band in several tissues.

## Storage

**Storage:**  
Store at -20°C. Stable for one year after shipment.  
**Storage Buffer:**  
PBS with 0.02% sodium azide and 50% glycerol pH 7.3.  
Aliquoting is unnecessary for -20°C storage

For technical support and original validation data for this product please contact:

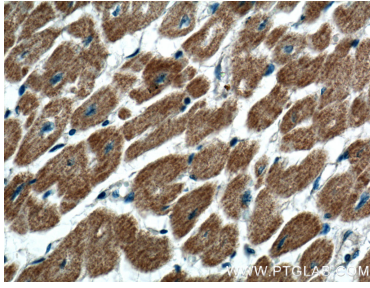
T: 4006900926

E: Proteintech-CN@ptglab.com

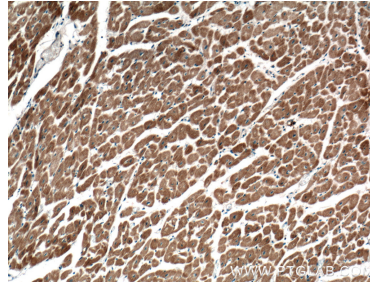
W: ptgcn.com

This product is exclusively available under Proteintech Group brand and is not available to purchase from any other manufacturer.

## Selected Validation Data



Immunohistochemical analysis of paraffin-embedded human heart tissue slide using 13445-1-AP (GIMAP2 antibody) at dilution of 1:200 (under 40x lens).



Immunohistochemical analysis of paraffin-embedded human heart tissue slide using 13445-1-AP (GIMAP2 antibody) at dilution of 1:200 (under 10x lens).



human heart tissue were subjected to SDS PAGE followed by western blot with 13445-1-AP (GIMAP2 antibody) at dilution of 1:300 incubated at room temperature for 1.5 hours.