

For Research Use Only

RUFY1 Polyclonal antibody

Catalog Number: 13498-1-AP **5 Publications**



Basic Information

| | | |
|--|---|--|
| Catalog Number: 13498-1-AP | GenBank Accession Number: BC032571 | Purification Method: Antigen affinity purification |
| Size: 550 µg/ml | GeneID (NCBI): 80230 | Recommended Dilutions: WB 1:1000-1:4000 IF/ICC 1:20-1:200 |
| Source: Rabbit | UNIPROT ID: Q96T51 | |
| Isotype: IgG | Full Name: RUN and FYVE domain containing 1 | |
| Immunogen Catalog Number: AG4324 | Calculated MW: 708 aa, 80 kDa | |
| | Observed MW: 69 kDa, 80 kDa | |

Applications

| | |
|--|--|
| Tested Applications: WB, IF/ICC, IP, ELISA | Positive Controls: |
| Cited Applications: WB, ColP, IF | WB: HeLa cells, IF/ICC: Hela cells, |
| Species Specificity: human, mouse, rat | |
| Cited Species: human, mouse | |

Background Information

Rab proteins form the largest group within the Ras superfamily of small GTPases, which acts as molecular switches by cycling between their inactive active GTP-bound and GDP-bound forms [PMID:15520808]. The small GTP-binding protein Rab4 has been involved in the recycling of $\alpha v \beta 3$ integrins in response to platelet-derived growth factor (PDGF) stimulation suggesting a role for Rab4 in cell adhesion and migration [PMID:17001082]. Rabip4 (Rab4 interacting protein), which possesses a RUN domain, two coiled-coil domains and a FYVE finger, was identified as an effector of Rab4, a small GTPase that plays a role in the endocytotic pathway in all cell types [PMID:11172003]. RUFY1 exists three isoforms and molecular weight of isoforms are 80 kDa, 69 kDa and 45 kDa.

Notable Publications

| Author | Pubmed ID | Journal | Application |
|-------------------------------|-----------|---------------|-------------|
| Meng Shi | 30478271 | Nat Commun | IF |
| Christine A Phillips-Krawczak | 25355947 | Mol Biol Cell | WB, IF |
| Qiaoming Zhi | 30407695 | Cancer Sci | ColP |

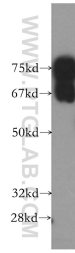
Storage

Storage:
Store at -20°C. Stable for one year after shipment.
Storage Buffer:
PBS with 0.02% sodium azide and 50% glycerol pH 7.3.
Aliquoting is unnecessary for -20°C storage

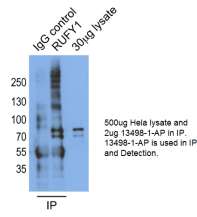
For technical support and original validation data for this product please contact:
T: 4006900926 E: Proteintech-CN@ptglab.com W: ptgcn.com

This product is exclusively available under Proteintech Group brand and is not available to purchase from any other manufacturer.

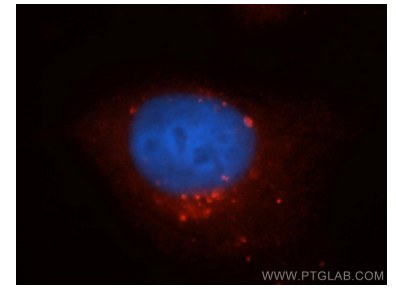
Selected Validation Data



HeLa cells were subjected to SDS PAGE followed by western blot with 13498-1-AP (RUFY1 antibody) at dilution of 1:1000 incubated at room temperature for 1.5 hours.



IP result of anti-RUFY1 (13498-1-AP for IP and Detection).



Immunofluorescent analysis of HeLa cells, using RUFY1 antibody 13498-1-AP at 1:50 dilution and Rhodamine-labeled goat anti-rabbit IgG (red). Blue pseudocolor = DAPI (fluorescent DNA dye).