

For Research Use Only

# Choline Kinase Alpha Polyclonal antibody



Catalog Number: 13520-1-AP

Featured Product

21 Publications

## Basic Information

**Catalog Number:**

13520-1-AP

**Size:**

500 µg/ml

**Source:**

Rabbit

**Isotype:**

IgG

**Immunogen Catalog Number:**

AG4761

**GenBank Accession Number:**

BC036471

**GeneID (NCBI):**

1119

**UNIPROT ID:**

P35790

**Full Name:**

choline kinase alpha

**Calculated MW:**

439 aa, 52 kDa

**Observed MW:**

50 kDa

**Purification Method:**

Antigen affinity purification

**Recommended Dilutions:**

WB 1:500-1:1000

IP 0.5-4.0 µg for 1.0-3.0 mg of total protein lysate

IHC 1:50-1:500

IF/ICC 1:50-1:500

## Applications

**Tested Applications:**

WB, IHC, IF/ICC, IP, ELISA

**Cited Applications:**

WB, IHC, ELISA, IF

**Species Specificity:**

human, mouse, rat

**Cited Species:**

human, mouse, rat

**Note-IHC: suggested antigen retrieval with TE buffer pH 9.0; (\*) Alternatively, antigen retrieval may be performed with citrate buffer pH 6.0**

**Positive Controls:**

**WB:** mouse spleen tissue, COLO 320 cells, mouse colon tissue, rat spleen tissue

**IP:** mouse spleen tissue,

**IHC:** human liver cancer tissue,

**IF/ICC:** HeLa cells,

## Background Information

CHKA (Choline kinase alpha) is also named as CHK, CKI, EK (Ethanolamine kinase) and belongs to the choline/ethanolamine kinase family. Choline kinase (ATP:choline phosphotransferase) is a cytosolic enzyme that catalyzes the committed step in the synthesis of PC by the CDP-choline pathway. The enzyme catalyzes the phosphorylation of choline with ATP to form phosphocholine and ADP (PMID:9506987). It has 2 isoforms produced by alternative splicing with the molecular weight of 52 kDa and 50 kDa.

## Notable Publications

Author	Pubmed ID	Journal	Application
Farhad Vesuna	36136285	Mol Cell Biochem	WB
Yantuanjin Ma	36372042	Placenta	IHC
Noriko Mori	26503172	NMR Biomed	WB

## Storage

**Storage:**

Store at -20°C. Stable for one year after shipment.

**Storage Buffer:**

PBS with 0.02% sodium azide and 50% glycerol pH 7.3.

Aliquoting is unnecessary for -20°C storage

For technical support and original validation data for this product please contact:

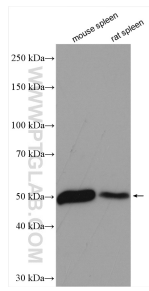
T: 4006900926

E: Proteintech-CN@ptglab.com

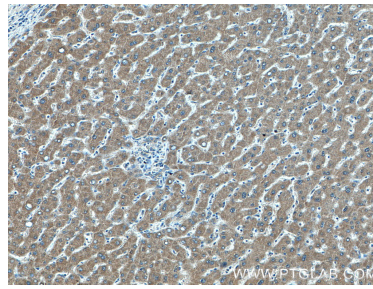
W: ptgcn.com

This product is exclusively available under Proteintech Group brand and is not available to purchase from any other manufacturer.

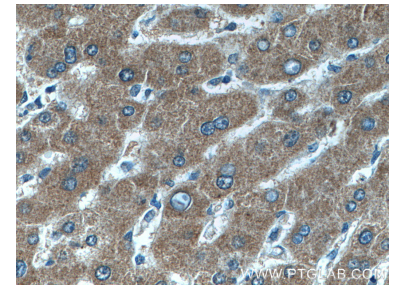
## Selected Validation Data



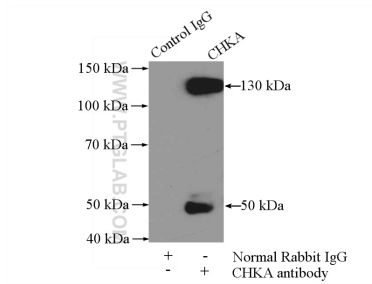
Various lysates were subjected to SDS PAGE followed by western blot with 13520-1-AP (Choline kinase alpha antibody) at dilution of 1:500 incubated at room temperature for 1.5 hours.



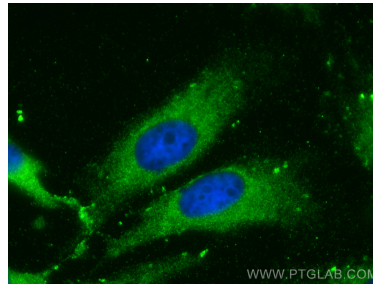
Immunohistochemical analysis of paraffin-embedded human liver cancer tissue slide using 13520-1-AP (Choline kinase alpha antibody) at dilution of 1:200 (under 10x lens).



Immunohistochemical analysis of paraffin-embedded human liver cancer tissue slide using 13520-1-AP (Choline kinase alpha antibody) at dilution of 1:200 (under 40x lens).



IP result of anti-Choline Kinase Alpha (IP:13520-1-AP, 4ug; Detection:13520-1-AP 1:500) with mouse spleen tissue lysate 4000ug.



Immunofluorescent analysis of (-20°C Methanol) fixed HeLa cells using Choline Kinase Alpha antibody (13520-1-AP) at dilution of 1:200 and CoraLite® 488-Conjugated AffiniPure Goat Anti-Rabbit IgG(H+L).