

For Research Use Only

PES1 Polyclonal antibody

Catalog Number: 13553-1-AP

Featured Product

5 Publications



Basic Information

Catalog Number:

13553-1-AP

Size:

500 µg/ml

Source:

Rabbit

Isotype:

IgG

Immunogen Catalog Number:

AG4342

GenBank Accession Number:

BC032489

GeneID (NCBI):

23481

UNIPROT ID:

O00541

Full Name:

pescadillo homolog 1, containing BRCT domain (zebrafish)

Calculated MW:

588 aa, 68 kDa

Observed MW:

72 kDa

Purification Method:

Antigen affinity purification

Recommended Dilutions:

WB 1:2000-1:10000

IP 0.5-4.0 µg for 1.0-3.0 mg of total protein lysate

IHC 1:50-1:500

IF/ICC 1:50-1:500

Applications

Tested Applications:

WB, IHC, IF/ICC, IP, ELISA

Cited Applications:

WB, IHC, IP, IF

Species Specificity:

human

Cited Species:

human, mouse, goat

Note-IHC: suggested antigen retrieval with TE buffer pH 9.0; (*) Alternatively, antigen retrieval may be performed with citrate buffer pH 6.0

Positive Controls:

WB : COLO 320 cells, MCF-7 cells

IP : COLO 320 cells,

IHC : human gliomas tissue,

IF/ICC : MCF-7 cells,

Background Information

Notable Publications

Author	Pubmed ID	Journal	Application
Zhipeng Sun	36499219	Int J Mol Sci	WB
Zehua Bian	34782005	J Exp Clin Cancer Res	WB,IHC,IP
Jing Wang	30630006	Life Sci	WB,IHC

Storage

Storage:

Store at -20°C. Stable for one year after shipment.

Storage Buffer:

PBS with 0.02% sodium azide and 50% glycerol pH 7.3.

Aliquoting is unnecessary for -20°C storage

For technical support and original validation data for this product please contact:

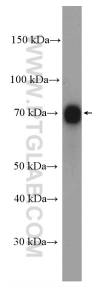
T: 4006900926

E: Proteintech-CN@ptglab.com

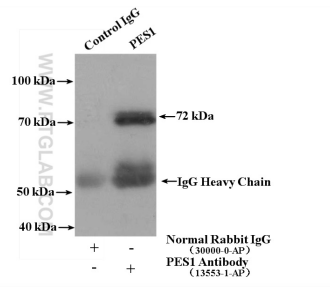
W: ptgcn.com

This product is exclusively available under Proteintech Group brand and is not available to purchase from any other manufacturer.

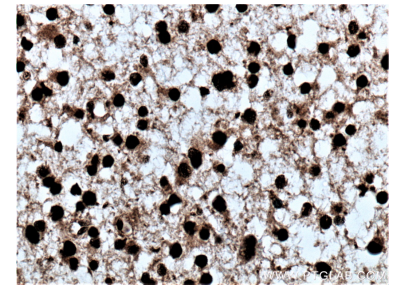
Selected Validation Data



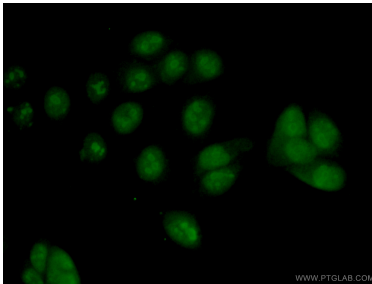
COLO 320 cells were subjected to SDS PAGE followed by western blot with 13553-1-AP (PES1 antibody) at dilution of 1:5000 incubated at room temperature for 1.5 hours.



COLO 320 cells were subjected to SDS PAGE followed by western blot with 13553-1-AP (PES1 antibody) at dilution of 1:300.



Immunohistochemical analysis of paraffin-embedded human gliomas tissue slide using 13553-1-AP (PES1 antibody) at dilution of 1:200 (under 40x lens. Heat mediated antigen retrieval with Tris-EDTA buffer (pH 9.0).



Immunofluorescent analysis of (4% PFA) fixed MCF-7 cells using 13553-1-AP (PES1 antibody) at dilution of 1:50 and Alexa Fluor 488-conjugated AffiniPure Goat Anti-Rabbit IgG(H+L).