

For Research Use Only

# TLK1 Polyclonal antibody

Catalog Number: 13564-1-AP **2 Publications**



## Basic Information

**Catalog Number:**

13564-1-AP

**Size:**

400 µg/ml

**Source:**

Rabbit

**Isotype:**

IgG

**Immunogen Catalog Number:**

AG4440

**GenBank Accession Number:**

BC032657

**GeneID (NCBI):**

9874

**UNIPROT ID:**

Q9UKI8

**Full Name:**

tousled-like kinase 1

**Calculated MW:**

766 aa, 87 kDa

**Observed MW:**

85 kDa

**Purification Method:**

Antigen affinity purification

**Recommended Dilutions:**

WB 1:500-1:3000

IP 0.5-4.0 µg for 1.0-3.0 mg of total protein lysate

IF/ICC 1:50-1:500

## Applications

**Tested Applications:**

IF/ICC, IP, WB, ELISA

**Cited Applications:**

WB, IHC

**Species Specificity:**

human, mouse, rat

**Cited Species:**

human, mouse

**Positive Controls:**

WB : HeLa cells,

IP : HeLa cells,

IF/ICC : HeLa cells,

## Background Information

### Notable Publications

Author	Pubmed ID	Journal	Application
Fangfang Wu	31311824	J Neurosci	WB
Ruo-Chuan Sun	38111505	World J Gastroenterol	WB,IHC

## Storage

**Storage:**

Store at -20°C. Stable for one year after shipment.

**Storage Buffer:**

PBS with 0.02% sodium azide and 50% glycerol pH 7.3.

Aliquoting is unnecessary for -20°C storage

For technical support and original validation data for this product please contact:

T: 4006900926

E: Proteintech-CN@ptglab.com

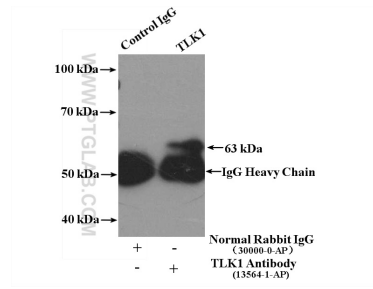
W: ptgcn.com

**This product is exclusively available under Proteintech Group brand and is not available to purchase from any other manufacturer.**

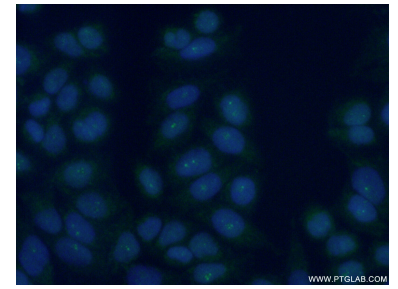
## Selected Validation Data



HeLa cells were subjected to SDS PAGE followed by western blot with 13564-1-AP (TLK1 antibody) at dilution of 1:500 incubated at room temperature for 1.5 hours.



IP result of anti-TLK1 (IP:13564-1-AP, 4ug; Detection:13564-1-AP 1:500) with HeLa cells lysate 3200ug.



Immunofluorescent analysis of (10% Formaldehyde) fixed HeLa cells using 13564-1-AP (TLK1 antibody) at dilution of 1:50 and Alexa Fluor 488-conjugated AffiniPure Goat Anti-Rabbit IgG(H+L).