

For Research Use Only

MPP2 Polyclonal antibody

Catalog Number: 13589-1-AP



Basic Information

Catalog Number:

13589-1-AP

Size:

600 µg/ml

Source:

Rabbit

Isotype:

IgG

Immunogen Catalog Number:

AG4223

GenBank Accession Number:

BC030287

GeneID (NCBI):

4355

UNIPROT ID:

Q14168

Full Name:

membrane protein, palmitoylated 2
(MAGUK p55 subfamily member 2)

Calculated MW:

576 aa, 65 kDa

Observed MW:

65 kDa, 60 kDa

Purification Method:

Antigen affinity purification

Recommended Dilutions:

WB 1:1000-1:5000

IP 0.5-4.0 µg for 1.0-3.0 mg of total
protein lysate

IHC 1:200-1:800

Applications

Tested Applications:

WB, IP, IHC, ELISA

Species Specificity:

human, mouse, rat

**Note-IHC: suggested antigen retrieval with
TE buffer pH 9.0; (*) Alternatively, antigen
retrieval may be performed with citrate
buffer pH 6.0**

Positive Controls:

WB: mouse eye tissue, mouse retina tissue

IP: mouse eye tissue,

IHC: mouse brain tissue,

Background Information

Membrane protein palmitoylated 2 (MPP2) is a member of the membrane-associated guanylate kinase (MAGUK) family. MPPs can form diverse protein complexes at the cell membranes and play an important role in cell structure, polarity and cell adhesion. MPP2 is a novel postsynaptic scaffold protein that binds to the synaptic cell adhesion molecule SynCAM1. MPP2 also is a component of AMPA receptor-associated protein complexes.

Storage

Storage:

Store at -20°C. Stable for one year after shipment.

Storage Buffer:

PBS with 0.02% sodium azide and 50% glycerol pH 7.3.

Aliquoting is unnecessary for -20°C storage

For technical support and original validation data for this product please contact:

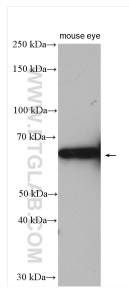
T: 4006900926

E: Proteintech-CN@ptglab.com

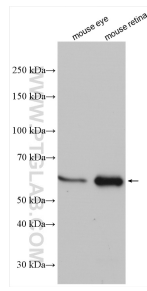
W: ptgcn.com

This product is exclusively available under Proteintech Group brand and is not available to purchase from any other manufacturer.

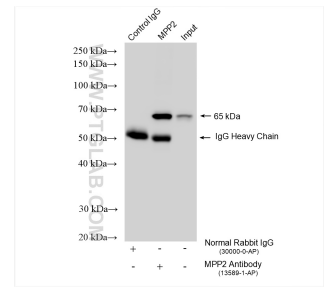
Selected Validation Data



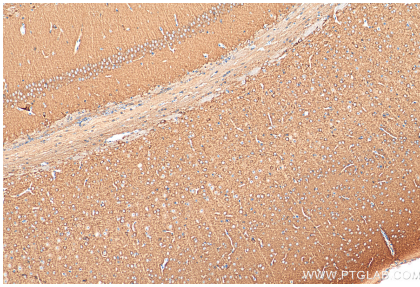
mouse eye tissue were subjected to SDS PAGE followed by western blot with 13589-1-AP (MPP2 antibody) at dilution of 1:3000 incubated at room temperature for 1.5 hours.



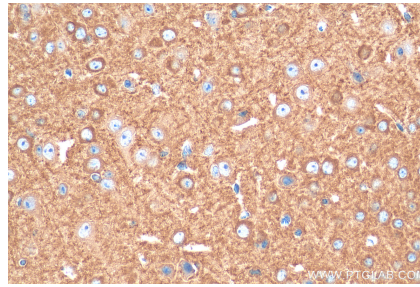
Various lysates were subjected to SDS PAGE followed by western blot with 13589-1-AP (MPP2 antibody) at dilution of 1:2500 incubated at room temperature for 1.5 hours.



IP result of anti-MPP2 (IP:13589-1-AP, 4 μ g; Detection:13589-1-AP 1:2000) with mouse eye tissue lysate 2260 μ g.



Immunohistochemical analysis of paraffin-embedded mouse brain tissue slide using 13589-1-AP (MPP2 antibody) at dilution of 1:400 (under 10x lens). Heat mediated antigen retrieval with Tris-EDTA buffer (pH 9.0).



Immunohistochemical analysis of paraffin-embedded mouse brain tissue slide using 13589-1-AP (MPP2 antibody) at dilution of 1:400 (under 40x lens). Heat mediated antigen retrieval with Tris-EDTA buffer (pH 9.0).