

For Research Use Only

Carboxypeptidase A6 Polyclonal antibody



Catalog Number: 13604-1-AP

1 Publications

Basic Information

Catalog Number: 13604-1-AP	GenBank Accession Number: BC033684	Purification Method: Antigen affinity purification
Size: 133 µg/ml	GeneID (NCBI): 57094	Recommended Dilutions: WB 1:500-1:1000 IHC 1:50-1:500 IF/ICC 1:10-1:100
Source: Rabbit	UNIPROT ID: Q8N4T0	
Isotype: IgG	Full Name: carboxypeptidase A6	
Immunogen Catalog Number: AG4466	Calculated MW: 437 aa, 51 kDa	
	Observed MW: 65 kDa, 51 kDa	

Applications

Tested Applications: WB, IHC, IF/ICC, ELISA	Positive Controls: WB : HepG2 cells, mouse brain tissue IHC : human gliomas tissue, IF/ICC : HepG2 cells,
Cited Applications: WB	
Species Specificity: human, mouse, rat	
Cited Species: human	
Note-IHC: suggested antigen retrieval with TE buffer pH 9.0; (*) Alternatively, antigen retrieval may be performed with citrate buffer pH 6.0	

Background Information

Carboxypeptidase A6 (CPA6) is an extracellular matrixbound metalloproteinase (CP) that has been implicated in Duane syndrome, a neurodevelopmental disorder in which the lateral rectus extraocular muscle is not properly innervated. Consistent with a role in Duane syndrome, CPA6 is expressed in a number of chondrocytic and nervous tissues during embryogenesis. It has three isoforms. The product recognizes the C-terminal of this protein.

Notable Publications

Author	Pubmed ID	Journal	Application
Xianren Wang	37011707	Arch Biochem Biophys	WB

Storage

Storage:
Store at -20°C. Stable for one year after shipment.
Storage Buffer:
PBS with 0.02% sodium azide and 50% glycerol pH 7.3.
Aliquoting is unnecessary for -20°C storage

For technical support and original validation data for this product please contact:

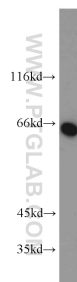
T: 4006900926

E: Proteintech-CN@ptglab.com

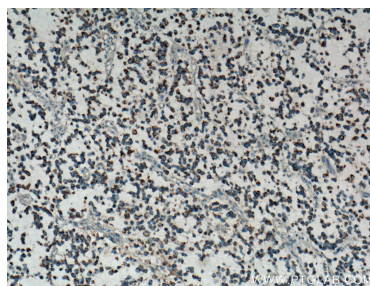
W: ptgcn.com

This product is exclusively available under Proteintech Group brand and is not available to purchase from any other manufacturer.

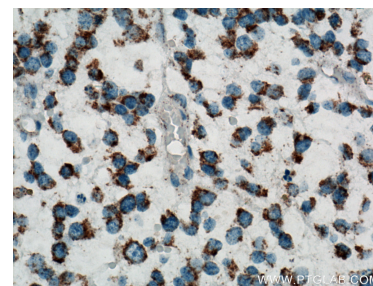
Selected Validation Data



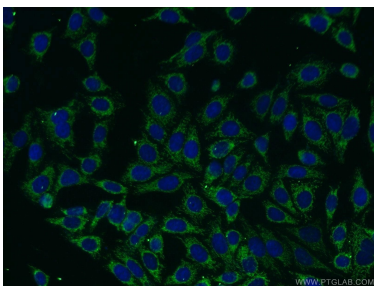
HepG2 cells were subjected to SDS PAGE followed by western blot with 13604-1-AP (Carboxypeptidase A6 antibody) at dilution of 1:500 incubated at room temperature for 1.5 hours.



Immunohistochemical analysis of paraffin-embedded human gliomas tissue slide using 13604-1-AP (Carboxypeptidase A6 antibody) at dilution of 1:200 (under 10x lens. Heat mediated antigen retrieval with Tris-EDTA buffer (pH 9.0).



Immunohistochemical analysis of paraffin-embedded human gliomas tissue slide using 13604-1-AP (Carboxypeptidase A6 antibody) at dilution of 1:200 (under 40x lens. Heat mediated antigen retrieval with Tris-EDTA buffer (pH 9.0).



Immunofluorescent analysis of HepG2 cells using 13604-1-AP (Carboxypeptidase A6 antibody) at dilution of 1:25 and Alexa Fluor 488-conjugated AffiniPure Goat Anti-Rabbit IgG(H+L).