

For Research Use Only

RASGEF1B Polyclonal antibody

Catalog Number: 13617-1-AP



Basic Information

Catalog Number: 13617-1-AP	GenBank Accession Number: BC036784	Purification Method: Antigen affinity purification
Size: 200 µg/ml	GeneID (NCBI): 153020	Recommended Dilutions: WB 1:500-1:1000 IHC 1:20-1:200
Source: Rabbit	UNIPROT ID: Q0VAM2	
Isotype: IgG	Full Name: RasGEF domain family, member 1B	
Immunogen Catalog Number: AG4525	Calculated MW: 55 kDa	
	Observed MW: 50 kDa	

Applications

Tested Applications:

IHC, WB, ELISA

Species Specificity:

human, mouse, rat

Note-IHC: suggested antigen retrieval with TE buffer pH 9.0; (*) Alternatively, antigen retrieval may be performed with citrate buffer pH 6.0

Positive Controls:

WB : human brain tissue, mouse lung tissue, mouse ovary tissue

IHC : human stomach tissue,

Background Information

RASGEF1B is a guanine-nucleotide exchange factor, whose expression is induced in macrophages on stimulation by TLR2 and TLR4 agonists. It interacts with Ras family proteins. It also interacts with CCDC124 during cytokinesis.

Storage

Storage:

Store at -20°C. Stable for one year after shipment.

Storage Buffer:

PBS with 0.02% sodium azide and 50% glycerol pH 7.3.

Aliquoting is unnecessary for -20°C storage

For technical support and original validation data for this product please contact:

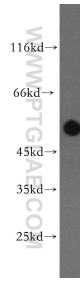
T: 4006900926

E: Proteintech-CN@ptglab.com

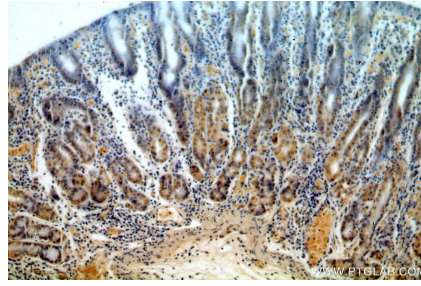
W: ptgcn.com

This product is exclusively available under Proteintech Group brand and is not available to purchase from any other manufacturer.

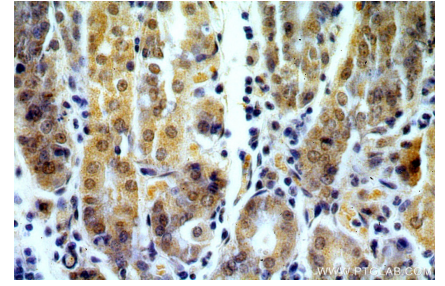
Selected Validation Data



human brain tissue were subjected to SDS PAGE followed by western blot with 13617-1-AP (RASGEF1B antibody) at dilution of 1:300 incubated at room temperature for 1.5 hours.



Immunohistochemical analysis of paraffin-embedded human stomach using 13617-1-AP (RASGEF1B antibody) at dilution of 1:50 (under 10x lens).



Immunohistochemical analysis of paraffin-embedded human stomach using 13617-1-AP (RASGEF1B antibody) at dilution of 1:50 (under 40x lens).