

For Research Use Only

# DNASE1L1 Polyclonal antibody

Catalog Number: 13653-1-AP

Featured Product

2 Publications



## Basic Information

**Catalog Number:**

13653-1-AP

**Size:**

500 µg/ml

**Source:**

Rabbit

**Isotype:**

IgG

**Immunogen Catalog Number:**

AG4222

**GenBank Accession Number:**

BC028092

**GeneID (NCBI):**

1774

**UNIPROT ID:**

P49184

**Full Name:**

deoxyribonuclease I-like 1

**Calculated MW:**

302 aa, 34 kDa

**Observed MW:**

34 kDa

**Purification Method:**

Antigen affinity purification

**Recommended Dilutions:**

WB 1:500-1:1000

IP 0.5-4.0 µg for 1.0-3.0 mg of total protein lysate

IHC 1:20-1:200

IF/ICC 1:10-1:100

## Applications

**Tested Applications:**

WB, IHC, IF/ICC, IP, ELISA

**Cited Applications:**

WB, IF

**Species Specificity:**

human, mouse, rat

**Cited Species:**

rat

**Note-IHC: suggested antigen retrieval with TE buffer pH 9.0; (\*) Alternatively, antigen retrieval may be performed with citrate buffer pH 6.0**

**Positive Controls:**

**WB** : mouse skeletal muscle tissue, rat skeletal muscle tissue

**IP** : mouse skeletal muscle tissue,

**IHC** : human skeletal muscle tissue,

**IF/ICC** : MCF-7 cells,

## Background Information

### Notable Publications

Author	Pubmed ID	Journal	Application
Zhu Bin	37454250	J Tradit Chin Med	WB
Huajian Yang	37048150	Cells	IF

## Storage

**Storage:**

Store at -20°C. Stable for one year after shipment.

**Storage Buffer:**

PBS with 0.02% sodium azide and 50% glycerol pH 7.3.

Aliquoting is unnecessary for -20°C storage

For technical support and original validation data for this product please contact:

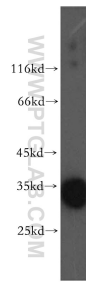
T: 4006900926

E: Proteintech-CN@ptglab.com

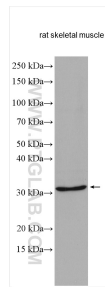
W: ptgcn.com

**This product is exclusively available under Proteintech Group brand and is not available to purchase from any other manufacturer.**

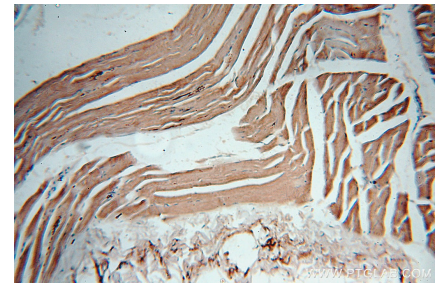
## Selected Validation Data



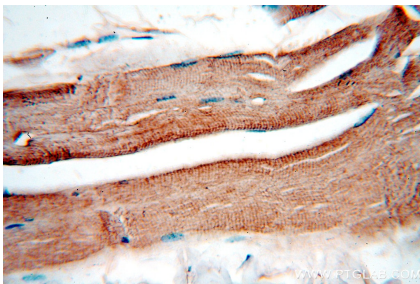
mouse skeletal muscle tissue were subjected to SDS PAGE followed by western blot with 13653-1-AP (DNASE1L1 antibody) at dilution of 1:1000 incubated at room temperature for 1.5 hours.



rat skeletal muscle tissue were subjected to SDS PAGE followed by western blot with 13653-1-AP (DNASE1L1 antibody) at dilution of 1:500 incubated at room temperature for 1.5 hours.



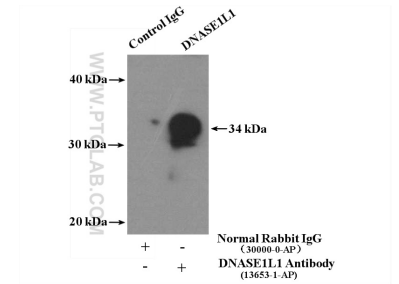
Immunohistochemical analysis of paraffin-embedded human skeletal muscle using 13653-1-AP (DNASE1L1 antibody) at dilution of 1:50 (under 10x lens).



Immunohistochemical analysis of paraffin-embedded human skeletal muscle using 13653-1-AP (DNASE1L1 antibody) at dilution of 1:50 (under 40x lens).



Immunofluorescent analysis of MCF-7 cells, using DNASE1L1 antibody 13653-1-AP at 1:25 dilution and Rhodamine-labeled goat anti-rabbit IgG (red). Blue pseudocolor = DAPI (fluorescent DNA dye).



IP result of anti-DNASE1L1 (IP:13653-1-AP, 4ug; Detection:13653-1-AP 1:800) with mouse skeletal muscle tissue lysate 4000ug.