

For Research Use Only

# BCKDHB Polyclonal antibody

Catalog Number: 13685-1-AP **8 Publications**



## Basic Information

<b>Catalog Number:</b> 13685-1-AP	<b>GenBank Accession Number:</b> BC040139	<b>Purification Method:</b> Antigen affinity purification
<b>Size:</b> 350 µg/ml	<b>GeneID (NCBI):</b> 594	<b>Recommended Dilutions:</b> WB 1:500-1:2000 IHC 1:50-1:500
<b>Source:</b> Rabbit	<b>UNIPROT ID:</b> P21953	
<b>Isotype:</b> IgG	<b>Full Name:</b> branched chain keto acid dehydrogenase E1, beta polypeptide	
<b>Immunogen Catalog Number:</b> AG4552	<b>Calculated MW:</b> 392 aa, 43 kDa	
	<b>Observed MW:</b> 37 kDa	

## Applications

<b>Tested Applications:</b> WB, IHC, ELISA	<b>Positive Controls:</b>
<b>Cited Applications:</b> WB, IHC, RIP	<b>WB:</b> mouse liver tissue, Transfected HEK-293 cells, rat liver tissue
<b>Species Specificity:</b> human, mouse, rat	<b>IHC:</b> human colon cancer tissue, human stomach tissue
<b>Cited Species:</b> human, mouse, sheep	
<b>Note-IHC: suggested antigen retrieval with TE buffer pH 9.0; (*) Alternatively, antigen retrieval may be performed with citrate buffer pH 6.0</b>	

## Background Information

Branched-chain alpha-keto acid dehydrogenase E1 component beta chain (BCKDHB; BCKDE1B; BCKDH E1-beta) is a subunit of the BCKDH complex, which is a mitochondrial enzyme in the degradation pathway for branched-chain amino acids (BCAA). Together with BCKDHA, BCKDHB forms the E1 subunit of this complex, whereas DBT and DLD are the E2 and E3 subunits, respectively. A deficiency of the BCKDH complex in humans causes maple syrup urine disease (MSUD), a severe neurometabolic disorder diagnosed by the detection of alloisoleucine in plasma (MIM 248600). (PMID: 30709776)

## Notable Publications

Author	Pubmed ID	Journal	Application
Yanan Wang	36433955	Nat Commun	IHC
Dongdong Yang	36417878	Cell Rep	WB
Tao Shi	29575645	Anim Sci J	WB

## Storage

**Storage:**  
Store at -20°C. Stable for one year after shipment.  
**Storage Buffer:**  
PBS with 0.02% sodium azide and 50% glycerol pH 7.3.  
Aliquoting is unnecessary for -20°C storage

For technical support and original validation data for this product please contact:

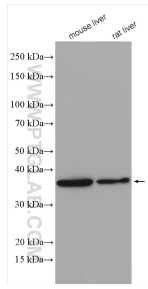
T: 4006900926

E: Proteintech-CN@ptglab.com

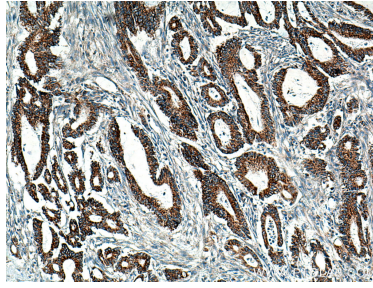
W: ptgcn.com

**This product is exclusively available under Proteintech Group brand and is not available to purchase from any other manufacturer.**

## Selected Validation Data



Various lysates were subjected to SDS PAGE followed by western blot with 13685-1-AP (BCKDHB antibody) at dilution of 1:1000 incubated at room temperature for 1.5 hours.



Immunohistochemical analysis of paraffin-embedded human colon cancer tissue slide using 13685-1-AP (BCKDHB antibody) at dilution of 1:200 (under 10x lens). Heat mediated antigen retrieval with Tris-EDTA buffer (pH 9.0).