

For Research Use Only

KIF2B Polyclonal antibody

Catalog Number: 13711-1-AP



Basic Information

Catalog Number:

13711-1-AP

Size:

500 µg/ml

Source:

Rabbit

Isotype:

IgG

Immunogen Catalog Number:

AG4648

GenBank Accession Number:

BC033802

GeneID (NCBI):

84643

UNIPROT ID:

Q8N4N8

Full Name:

kinesin family member 2B

Calculated MW:

673 aa, 76 kDa

Observed MW:

80 kDa

Purification Method:

Antigen affinity purification

Recommended Dilutions:

WB 1:500-1:2000

IP 0.5-4.0 µg for 1.0-3.0 mg of total protein lysate

Applications

Tested Applications:

IP, WB, ELISA

Species Specificity:

human, mouse

Positive Controls:

WB : mouse brain tissue, mouse testis tissue

IP : mouse testis tissue,

Background Information

KIF2B belongs to the TRAFAC class myosin-kinesin ATPase superfamily, Kinesin family and MCAK/KIF2 subfamily. KIF2B is evidently required for spindle assembly, chromosome movement and cytokinesis (PMID: 17538014). The molecular weight of KIF2B is 76 kDa. It plays an important role in chromosome congression (PMID: 23891108).

Storage

Storage:

Store at -20°C. Stable for one year after shipment.

Storage Buffer:

PBS with 0.02% sodium azide and 50% glycerol pH 7.3.

Aliquoting is unnecessary for -20°C storage

For technical support and original validation data for this product please contact:

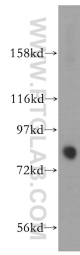
T: 4006900926

E: Proteintech-CN@ptglab.com

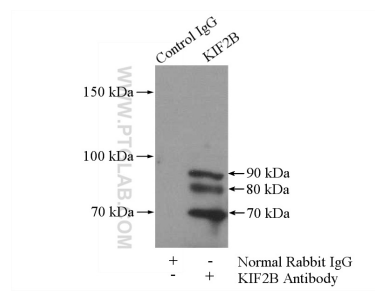
W: ptgcn.com

This product is exclusively available under Proteintech Group brand and is not available to purchase from any other manufacturer.

Selected Validation Data



mouse brain tissue were subjected to SDS PAGE followed by western blot with 13711-1-AP (KIF2B antibody) at dilution of 1:1000 incubated at room temperature for 1.5 hours.



IP result of anti-KIF2B (IP:13711-1-AP, 4ug; Detection:13711-1-AP 1:1000) with mouse testis tissue lysate 4000ug.