

For Research Use Only

CaMKII alpha Polyclonal antibody

Catalog Number: 13730-1-AP **21 Publications**



Basic Information

Catalog Number: 13730-1-AP	GenBank Accession Number: BC040457	Purification Method: Antigen affinity purification
Size: 400 µg/ml	GeneID (NCBI): 815	Recommended Dilutions: WB 1:1000-1:5000 IHC 1:50-1:500 IF 1:20-1:200
Source: Rabbit	UNIPROT ID: Q9UQM7	
Isotype: IgG	Full Name: calcium/calmodulin-dependent protein kinase II alpha	
Immunogen Catalog Number: AG4745	Calculated MW: 478 aa, 54 kDa	
	Observed MW: 45-60 kDa	

Applications

Tested Applications: IF/ICC, IHC, WB, ELISA	Positive Controls: WB : mouse brain tissue, rat brain tissue IHC : human renal cell carcinoma tissue, IF : SH-SY5Y cells,
Cited Applications: WB,IF	
Species Specificity: human, mouse, rat	
Cited Species: camel, human, rat, mouse, pig	
Note-IHC: suggested antigen retrieval with TE buffer pH 9.0; (*) Alternatively, antigen retrieval may be performed with citrate buffer pH 6.0	

Background Information

CaM-kinase II (CAMK2) is a prominent kinase in the central nervous system that may function in long-term potentiation and neurotransmitter release. It is a member of the NMDAR signaling complex in excitatory synapses it may regulate NMDAR-dependent potentiation of the AMPAR and synaptic plasticity. This antibody can recognize all the members of CAMK2 family.

Notable Publications

Author	Pubmed ID	Journal	Application
Yitian Lu	36071475	J Neuroinflammation	WB
Mohammad Ejaz Ahmed	27604243	J Mol Neurosci	WB
Wen Zhang	36265757	Neuroscience	WB

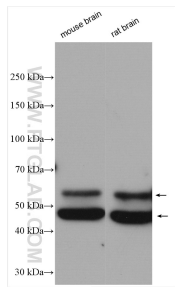
Storage

Storage:
Store at -20°C. Stable for one year after shipment.
Storage Buffer:
PBS with 0.02% sodium azide and 50% glycerol pH 7.3.
Aliquoting is unnecessary for -20°C storage

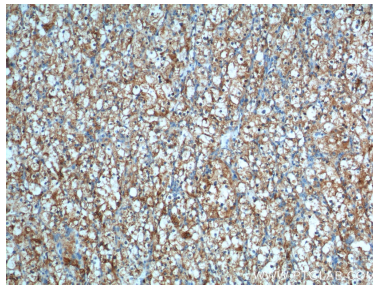
For technical support and original validation data for this product please contact:
T: 4006900926 E: Proteintech-CN@ptglab.com W: ptgcn.com

This product is exclusively available under Proteintech Group brand and is not available to purchase from any other manufacturer.

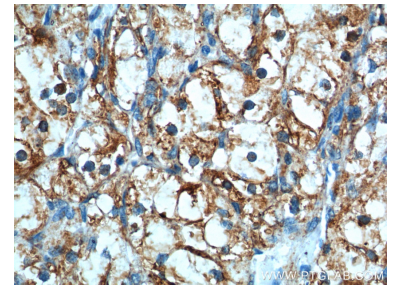
Selected Validation Data



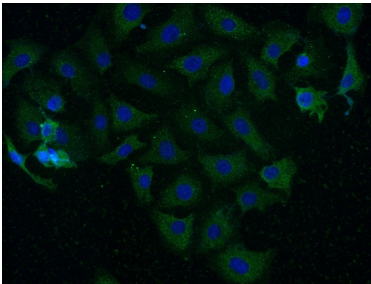
Various lysates were subjected to SDS PAGE followed by western blot with 13730-1-AP (CAMK2 antibody) at dilution of 1:2500 incubated at room temperature for 1.5 hours.



Immunohistochemical analysis of paraffin-embedded human renal cell carcinoma tissue slide using 13730-1-AP (CAMK2 antibody at dilution of 1:200 (under 10x lens).



Immunohistochemical analysis of paraffin-embedded human renal cell carcinoma tissue slide using 13730-1-AP (CAMK2 antibody at dilution of 1:200 (under 40x lens).



Immunofluorescent analysis of (-20°C Ethanol) fixed SH-SY5Y cells using 13730-1-AP (CAMK2 antibody) at dilution of 1:50 and Alexa Fluor 488-conjugated AffiniPure Goat Anti-Rabbit IgG(H+L).