

For Research Use Only

PDE1C Polyclonal antibody

Catalog Number: 13785-1-AP **2 Publications**



Basic Information

Catalog Number:

13785-1-AP

Size:

350 µg/ml

Source:

Rabbit

Isotype:

IgG

Immunogen Catalog Number:

AG4798

GenBank Accession Number:

BC022525

GeneID (NCBI):

5137

UNIPROT ID:

Q14123

Full Name:

phosphodiesterase 1C, calmodulin-dependent 70kDa

Calculated MW:

634 aa, 72 kDa

Observed MW:

68 kDa

Purification Method:

Antigen affinity purification

Recommended Dilutions:

WB 1:500-1:2000

IP 0.5-4.0 µg for 1.0-3.0 mg of total protein lysate

Applications

Tested Applications:

IP, WB, ELISA

Cited Applications:

WB

Species Specificity:

human, mouse

Cited Species:

rat, mouse

Positive Controls:

WB : human heart tissue,

IP : mouse heart tissue,

Background Information

Cyclic nucleotide phosphodiesterases (PDEs) catalyze hydrolysis of the cyclic nucleotides cAMP and cGMP to the corresponding nucleoside 5-prime-monophosphates. PDE1C, is calmodulin-dependent PDEs (CaM-PDEs) that are stimulated by a calcium-calmodulin complex. Expression of PDE1C may be an important component in signal transduction pathways mediated by calcium that permit cell cycle traverse and proliferation (PMID:9366577). It has 2 isoforms produced by alternative splicing.

Notable Publications

Author	Pubmed ID	Journal	Application
Makoto Ando	28870522	Free Radic Biol Med	WB
Mehdi Eshraghi	32426479	Sci Adv	WB

Storage

Storage:

Store at -20°C. Stable for one year after shipment.

Storage Buffer:

PBS with 0.02% sodium azide and 50% glycerol pH 7.3.

Aliquoting is unnecessary for -20°C storage

For technical support and original validation data for this product please contact:

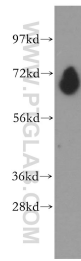
T: 4006900926

E: Proteintech-CN@ptglab.com

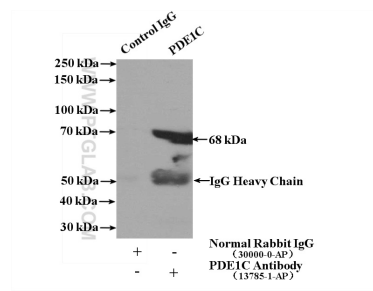
W: ptgcn.com

This product is exclusively available under Proteintech Group brand and is not available to purchase from any other manufacturer.

Selected Validation Data



human heart tissue were subjected to SDS PAGE followed by western blot with 13785-1-AP (PDE1C antibody) at dilution of 1:500 incubated at room temperature for 1.5 hours.



IP result of anti-PDE1C (IP:13785-1-AP, 4ug; Detection:13785-1-AP 1:500) with mouse heart tissue lysate 4000ug.