

For Research Use Only

# DIXDC1 Polyclonal antibody

Catalog Number: 13816-1-AP

2 Publications



## Basic Information

<b>Catalog Number:</b> 13816-1-AP	<b>GenBank Accession Number:</b> BC033034	<b>Purification Method:</b> Antigen affinity purification
<b>Size:</b> 450 µg/ml	<b>GeneID (NCBI):</b> 85458	<b>Recommended Dilutions:</b> WB 1:500-1:3000 IHC 1:50-1:500
<b>Source:</b> Rabbit	<b>UNIPROT ID:</b> Q155Q3	
<b>Isotype:</b> IgG	<b>Full Name:</b> DIX domain containing 1	
<b>Immunogen Catalog Number:</b> AG4904	<b>Calculated MW:</b> 683 aa, 77 kDa	
	<b>Observed MW:</b> 70-75 kDa	

## Applications

<b>Tested Applications:</b> IHC, WB, ELISA	<b>Positive Controls:</b> WB : mouse skeletal muscle tissue, mouse heart tissue
<b>Cited Applications:</b> WB	<b>IHC :</b> human heart tissue, human kidney tissue, human testis tissue, human skin tissue, human lung tissue, human ovary tissue
<b>Species Specificity:</b> human, mouse	
<b>Cited Species:</b> human, rat	
<b>Note-IHC: suggested antigen retrieval with TE buffer pH 9.0; (*) Alternatively, antigen retrieval may be performed with citrate buffer pH 6.0</b>	

## Background Information

### Notable Publications

Author	Pubmed ID	Journal	Application
Jérémy Willekens	29804229	Mol Neurobiol	WB
Yahui Leng	38656551	Mol Carcinog	WB

## Storage

**Storage:**  
Store at -20°C. Stable for one year after shipment.  
**Storage Buffer:**  
PBS with 0.02% sodium azide and 50% glycerol pH 7.3.  
Aliquoting is unnecessary for -20°C storage

For technical support and original validation data for this product please contact:

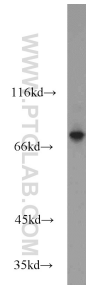
T: 4006900926

E: [Proteintech-CN@ptglab.com](mailto:Proteintech-CN@ptglab.com)

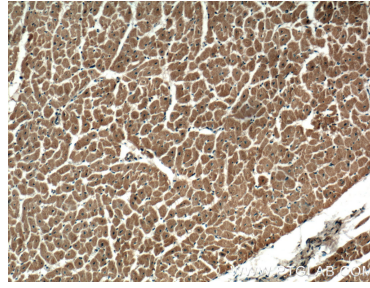
W: [ptgcn.com](http://ptgcn.com)

This product is exclusively available under Proteintech Group brand and is not available to purchase from any other manufacturer.

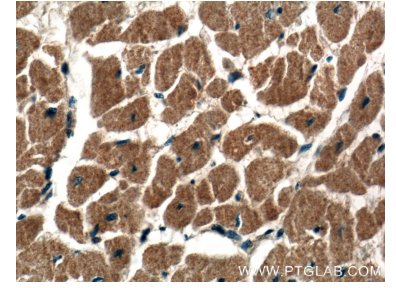
## Selected Validation Data



mouse skeletal muscle tissue were subjected to SDS PAGE followed by western blot with 13816-1-AP (DIXDC1 antibody) at dilution of 1:1500 incubated at room temperature for 1.5 hours.



Immunohistochemical analysis of paraffin-embedded human heart tissue slide using 13816-1-AP (DIXDC1 antibody) at dilution of 1:200 (under 10x lens).



Immunohistochemical analysis of paraffin-embedded human heart tissue slide using 13816-1-AP (DIXDC1 antibody) at dilution of 1:200 (under 40x lens).