

For Research Use Only

# GTPBP4 Polyclonal antibody, PBS Only

Catalog Number: 13897-1-PBS

Featured Product



## Basic Information

Catalog Number:

13897-1-PBS

Size:

1 mg/ml

Source:

Rabbit

Isotype:

IgG

Immunogen Catalog Number:

AG4859

GenBank Accession Number:

BC038975

GeneID (NCBI):

23560

UNIPROT ID:

Q9BZE4

Full Name:

GTP binding protein 4

Calculated MW:

634 aa, 74 kDa

Observed MW:

74 kDa

Purification Method:

Antigen affinity purification

## Applications

Tested Applications:

WB, IF/ICC, IP, Indirect ELISA

Species Specificity:

human, mouse

## Background Information

GTP-binding proteins are GTPases and function as molecular switches that can flip between two states: active, when GTP is bound, and inactive, when GDP is bound. 'Active' in this context usually means that the molecule acts as a signal to trigger other events in the cell. When an extracellular ligand binds to a G-protein-linked receptor, the receptor changes its conformation and switches on the trimeric G proteins that associate with it by causing them to eject their GDP and replace it with GTP. The switch is turned off when the G protein hydrolyzes its own bound GTP, converting it back to GDP. But before that occurs, the active protein has an opportunity to diffuse away from the receptor and deliver its message for a prolonged period to its downstream target.

## Storage

Storage:

Store at -80°C.

The product is shipped with ice packs. Upon receipt, store it immediately at -80°C

Storage Buffer:

PBS Only

For technical support and original validation data for this product please contact:

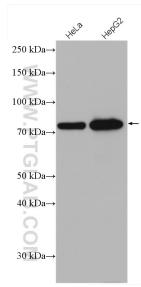
T: 4006900926

E: [Proteintech-CN@ptglab.com](mailto:Proteintech-CN@ptglab.com)

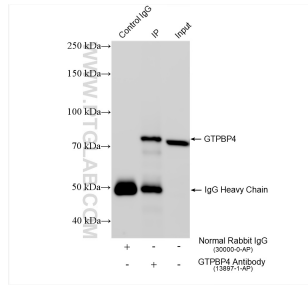
W: [ptgcn.com](http://ptgcn.com)

This product is exclusively available under Proteintech Group brand and is not available to purchase from any other manufacturer.

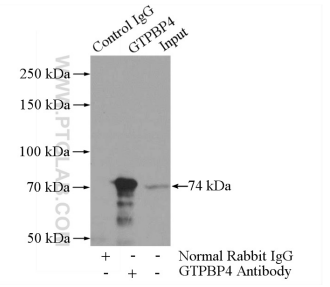
## Selected Validation Data



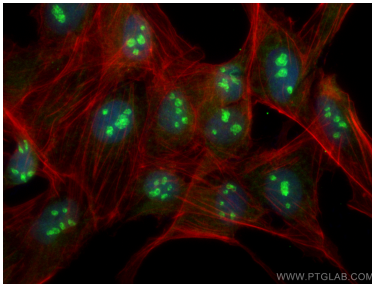
Various lysates were subjected to SDS PAGE followed by western blot with 13897-1-AP (GTPBP4 antibody) at dilution of 1:8000 incubated at room temperature for 1.5 hours. This data was developed using the same antibody clone with 13897-1-PBS in a different storage buffer formulation.



IP result of anti-GTPBP4 (IP:13897-1-AP, 4ug; Detection:13897-1-AP 1:5000) with HeLa cells lysate 1280 ug. This data was developed using the same antibody clone with 13897-1-PBS in a different storage buffer formulation.



IP result of anti-GTPBP4 (IP:13897-1-AP, 4ug; Detection:13897-1-AP 1:800) with mouse testis tissue lysate 4000ug. This data was developed using the same antibody clone with 13897-1-PBS in a different storage buffer formulation.



Immunofluorescent analysis of (4% PFA) fixed MDCK cells using GTPBP4 antibody (13897-1-AP) at dilution of 1:400 and Coralite®488-Conjugated AffiniPure Goat Anti-Rabbit IgG(H+L) (SA00013-2), CL594-Phalloidin (red). This data was developed using the same antibody clone with 13897-1-PBS in a different storage buffer formulation.