

For Research Use Only

# DCX Polyclonal antibody, PBS Only

Catalog Number: 13925-1-PBS



## Basic Information

<b>Catalog Number:</b> 13925-1-PBS	<b>GenBank Accession Number:</b> BC027925	<b>Purification Method:</b> Antigen affinity purification
<b>Size:</b> 1 mg/ml	<b>GeneID (NCBI):</b> 1641	
<b>Source:</b> Rabbit	<b>UNIPROT ID:</b> O43602	
<b>Isotype:</b> IgG	<b>Full Name:</b> doublecortin	
<b>Immunogen Catalog Number:</b> AG4945	<b>Calculated MW:</b> 402 aa, 45 kDa	
	<b>Observed MW:</b> 40 kDa	

## Applications

**Tested Applications:**  
WB, IHC, IF/ICC, Indirect ELISA

**Species Specificity:**  
human, mouse, rat

## Background Information

DCX (Doublecortin) is a microtubule-associated protein that is essential for normal brain development. DCX is expressed in migrating neurons throughout the central and peripheral nervous system during embryonic and postnatal development. Anti-DCX antibodies are widely used for detection of neurogenesis. It's also a common neuron marker since its expression is specific to neurons.

## Storage

**Storage:**  
Store at -80°C.  
**The product is shipped with ice packs. Upon receipt, store it immediately at -80°C**

**Storage Buffer:**  
PBS Only

For technical support and original validation data for this product please contact:

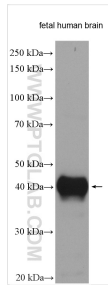
T: 4006900926

E: [Proteintech-CN@ptglab.com](mailto:Proteintech-CN@ptglab.com)

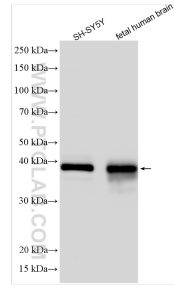
W: [ptgcn.com](http://ptgcn.com)

**This product is exclusively available under Proteintech Group brand and is not available to purchase from any other manufacturer.**

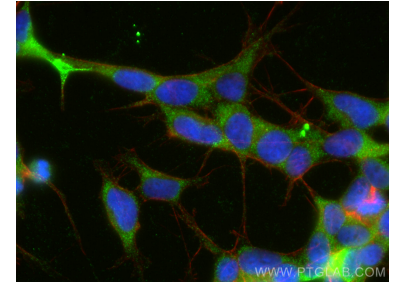
## Selected Validation Data



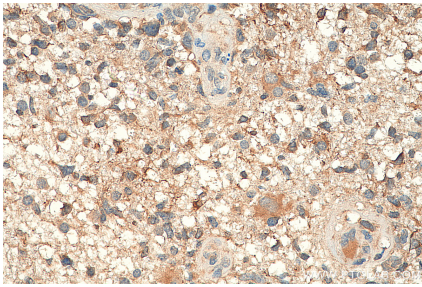
Fetal human brain lysates were subjected to SDS PAGE followed by western blot with 13925-1-AP (DCX antibody) at dilution of 1:1000 incubated at room temperature for 1.5 hours. This data was developed using the same antibody clone with 13925-1-PBS in a different storage buffer formulation.



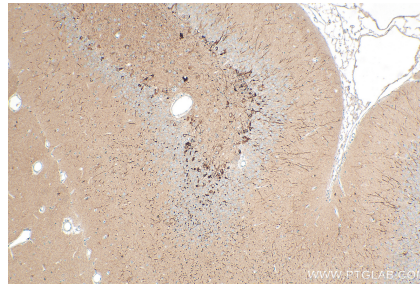
Various lysates were subjected to SDS PAGE followed by western blot with 13925-1-AP (DCX antibody) at dilution of 1:6000 incubated at room temperature for 1.5 hours. This data was developed using the same antibody clone with 13925-1-PBS in a different storage buffer formulation.



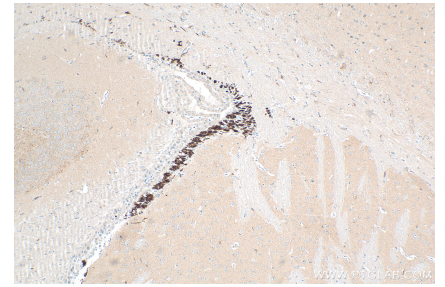
Immunofluorescent analysis of (-20°C Ethanol) fixed SH-SY5Y cells using DCX antibody (13925-1-AP) at dilution of 1:200 and Coralite@488-Conjugated AffiniPure Goat Anti-Rabbit IgG(H+L), CL594-Phalloidin (red). This data was developed using the same antibody clone with 13925-1-PBS in a different storage buffer formulation.



Immunohistochemical analysis of paraffin-embedded human gliomas tissue slide using 13925-1-AP (DCX antibody) at dilution of 1:200 (under 40x lens). Heat mediated antigen retrieval with Tris-EDTA buffer (pH 9.0). This data was developed using the same antibody clone with 13925-1-PBS in a different storage buffer formulation.



Immunohistochemical analysis of paraffin-embedded rat brain tissue slide using 13925-1-AP (DCX antibody) at dilution of 1:2000 (under 10x lens). Heat mediated antigen retrieval with Tris-EDTA buffer (pH 9.0). This data was developed using the same antibody clone with 13925-1-PBS in a different storage buffer formulation.



Immunohistochemical analysis of paraffin-embedded mouse brain tissue slide using 13925-1-AP (DCX antibody) at dilution of 1:2000 (under 10x lens). Heat mediated antigen retrieval with Tris-EDTA buffer (pH 9.0). This data was developed using the same antibody clone with 13925-1-PBS in a different storage buffer formulation.