

For Research Use Only

PGM2L1 Polyclonal antibody

Catalog Number: 13942-1-AP **2 Publications**



Basic Information

Catalog Number:

13942-1-AP

Size:

600 µg/ml

Source:

Rabbit

Isotype:

IgG

Immunogen Catalog Number:

AG5019

GenBank Accession Number:

BC059360

GeneID (NCBI):

283209

UNIPROT ID:

Q6PCE3

Full Name:

phosphoglucomutase 2-like 1

Calculated MW:

70 kDa

Observed MW:

72 kDa

Purification Method:

Antigen affinity purification

Recommended Dilutions:

WB 1:1000-1:6000

IP 0.5-4.0 µg for 1.0-3.0 mg of total protein lysate

IHC 1:50-1:500

Applications

Tested Applications:

WB, IP, IHC, ELISA

Cited Applications:

WB, IHC

Species Specificity:

human, mouse, rat

Cited Species:

human, mouse

Note-IHC: suggested antigen retrieval with TE buffer pH 9.0; (*) Alternatively, antigen retrieval may be performed with citrate buffer pH 6.0

Positive Controls:

WB : mouse brain tissue, mouse skeletal muscle tissue, rat brain tissue, mouse cerebellum tissue, rat cerebellum tissue

IP : mouse brain tissue,

IHC : human gliomas tissue,

Background Information

Notable Publications

Author	Pubmed ID	Journal	Application
Stephanie Zur Nedden	39332493	Metabolism	WB
Motahareh Solina Safari	39182844	Mol Metab	WB,IHC

Storage

Storage:

Store at -20°C. Stable for one year after shipment.

Storage Buffer:

PBS with 0.02% sodium azide and 50% glycerol pH 7.3.

Aliquoting is unnecessary for -20°C storage

For technical support and original validation data for this product please contact:

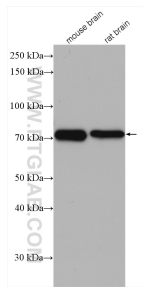
T: 4006900926

E: Proteintech-CN@ptglab.com

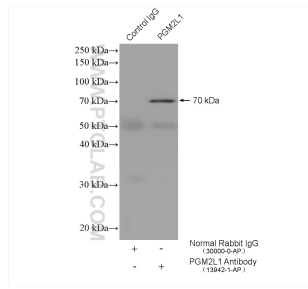
W: ptgcn.com

This product is exclusively available under Proteintech Group brand and is not available to purchase from any other manufacturer.

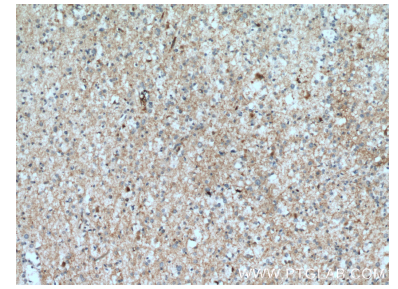
Selected Validation Data



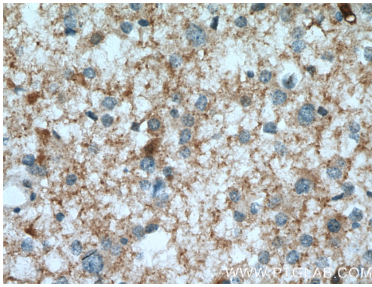
Various lysates were subjected to SDS PAGE followed by western blot with 13942-1-AP (PGM2L1 antibody) at dilution of 1:2000 incubated at room temperature for 1.5 hours.



IP result of anti-PGM2L1 (IP:13942-1-AP, 4ug; Detection:13942-1-AP 1:300) with mouse brain tissue lysate 4000 ug.



Immunohistochemical analysis of paraffin-embedded human gliomas tissue slide using 13942-1-AP (PGM2L1 antibody) at dilution of 1:100 (under 10x lens. Heat mediated antigen retrieval with Tris-EDTA buffer (pH 9.0).



Immunohistochemical analysis of paraffin-embedded human gliomas tissue slide using 13942-1-AP (PGM2L1 antibody) at dilution of 1:100 (under 40x lens. Heat mediated antigen retrieval with Tris-EDTA buffer (pH 9.0).