

For Research Use Only

# PSMA8 Polyclonal antibody

Catalog Number:14022-1-AP

Featured Product

2 Publications



## Basic Information

**Catalog Number:**

14022-1-AP

**Size:**

600 ug/ml

**Source:**

Rabbit

**Isotype:**

IgG

**Immunogen Catalog Number:**

AG5138

**GenBank Accession Number:**

BC042820

**GeneID (NCBI):**

143471

**UNIPROT ID:**

Q8TAA3

**Full Name:**

proteasome (prosome, macropain)  
subunit, alpha type, 8

**Calculated MW:**

29 kDa

**Observed MW:**

28 kDa

**Purification Method:**

Antigen affinity purification

**Recommended Dilutions:**

WB 1:500-1:2000

IHC 1:200-1:500

IF/ICC 1:10-1:100

## Applications

**Tested Applications:**

WB, IHC, IF/ICC, ELISA

**Cited Applications:**

WB, IF

**Species Specificity:**

human, mouse, rat

**Cited Species:**

mouse

**Note-IHC: suggested antigen retrieval with TE buffer pH 9.0; (\*) Alternatively, antigen retrieval may be performed with citrate buffer pH 6.0**

**Positive Controls:**

**WB:** Jurkat cells, K-562 cells, mouse thymus tissue, HeLa cells, rat thymus tissue

**IHC:** human testis tissue, mouse testis tissue

**IF/ICC:** HepG2 cells,

## Background Information

### Notable Publications

Author	Pubmed ID	Journal	Application
Zhiming Li	35736136	Nucleic Acids Res	WB
Laura Gómez-H	31437213	PLoS Genet	IF

## Storage

**Storage:**

Store at -20°C. Stable for one year after shipment.

**Storage Buffer:**

PBS with 0.02% sodium azide and 50% glycerol pH 7.3.

Aliquoting is unnecessary for -20°C storage

For technical support and original validation data for this product please contact:

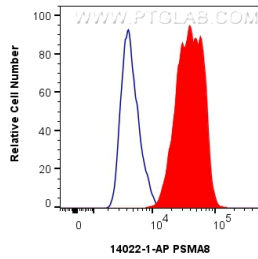
T: 4006900926

E: Proteintech-CN@ptglab.com

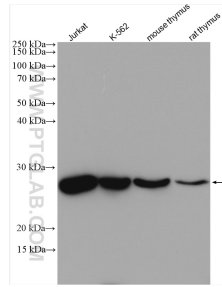
W: ptgcn.com

**This product is exclusively available under Proteintech Group brand and is not available to purchase from any other manufacturer.**

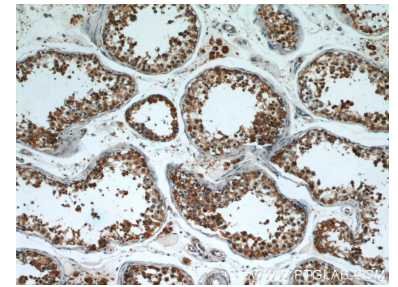
## Selected Validation Data



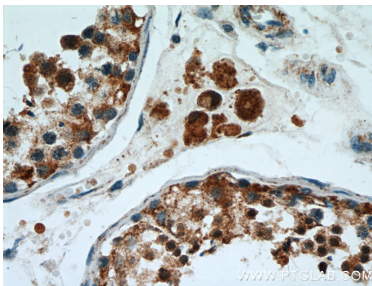
1x10<sup>6</sup> HepG2 cells were intracellularly stained with 0.25 ug PSMA8 Polyclonal antibody (14022-1-AP) and CoraLite@488-Conjugated Goat Anti-Rabbit IgG(H+L) (SA00013-2)(red), or 0.25 ug Rabbit IgG control Rabbit PolyAb (30000-0-AP) (blue). Cells were fixed with 4% PFA and permeabilized with Flow Cytometry Perm Buffer (PF00011-C).



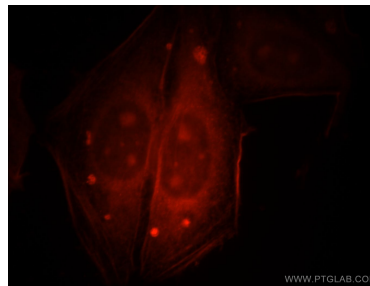
Various lysates were subjected to SDS PAGE followed by western blot with 14022-1-AP (PSMA8 antibody) at dilution of 1:1000 incubated at room temperature for 1.5 hours.



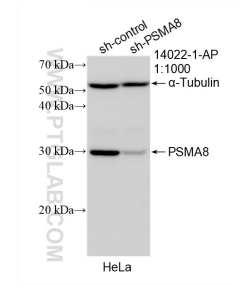
Immunohistochemical analysis of paraffin-embedded human testis using 14022-1-AP (PSMA8 antibody) at dilution of 1:50 (under 10x lens).



Immunohistochemical analysis of paraffin-embedded human testis using 14022-1-AP (PSMA8 antibody) at dilution of 1:50 (under 40x lens).



Immunofluorescent analysis of HepG2 cells, using PSMA8 antibody 14022-1-AP at 1:25 dilution and Rhodamine-labeled goat anti-rabbit IgG (red).



WB result of PSMA8 antibody (14022-1-AP; 1:1000; incubated at room temperature for 1.5 hours) with sh-Control and sh-PSMA8 transfected HeLa cells.