

For Research Use Only

SETD8 Polyclonal antibody

Catalog Number:14063-1-AP

Featured Product

24 Publications



Basic Information

Catalog Number:

14063-1-AP

Size:

900 ug/ml

Source:

Rabbit

Isotype:

IgG

Immunogen Catalog Number:

AG5114

GenBank Accession Number:

BC050346

GeneID (NCBI):

387893

UNIPROT ID:

Q9NQR1

Full Name:

SET domain containing (lysine methyltransferase) 8

Calculated MW:

43 kDa

Observed MW:

43 kDa

Purification Method:

Antigen affinity purification

Recommended Dilutions:

WB 1:1000-1:4000

IHC 1:50-1:500

Applications

Tested Applications:

WB, IHC, ELISA

Cited Applications:

WB, IHC, IF, IP, CoIP, ChIP

Species Specificity:

human, mouse

Cited Species:

human, mouse, rat

Note-IHC: suggested antigen retrieval with TE buffer pH 9.0; (*) Alternatively, antigen retrieval may be performed with citrate buffer pH 6.0

Positive Controls:

WB : HeLa cells, RAW 264.7 cells, HepG2 cells, A549 cells, NIH/3T3 cells

IHC : human breast cancer tissue,

Background Information

SETD8, also known as Set8, PR-Set7, or KMT5A, is a member of the SET domain family of histone lysine methyltransferases and, to date, the only known enzyme that catalyzes monomethylation of H4K20 in eukaryotes, which is involved in DNA damage response, mitotic condensation, and DNA replication. SETD8 is overexpressed in various types of tumors, such as bladder cancer, non-small cell lung carcinoma, and small cell lung carcinoma, and is associated with a shorter survival time for gastric, esophageal, and prostate cancer patients.

Notable Publications

Author	Pubmed ID	Journal	Application
Xuefang Shen	33028948	Exp Mol Med	WB,IHC, IF
Lihong Lu	34803485	Int J Biol Sci	WB,IHC,IF,CoIP
Mengqi Liu	34599596	Acta Biochim Biophys Sin (Shanghai)	WB,IHC

Storage

Storage:

Store at -20°C. Stable for one year after shipment.

Storage Buffer:

PBS with 0.02% sodium azide and 50% glycerol pH 7.3.

Aliquoting is unnecessary for -20°C storage

For technical support and original validation data for this product please contact:

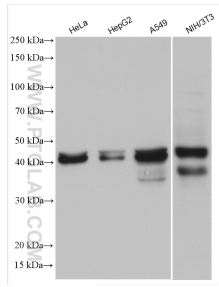
T: 4006900926

E: Proteintech-CN@ptglab.com

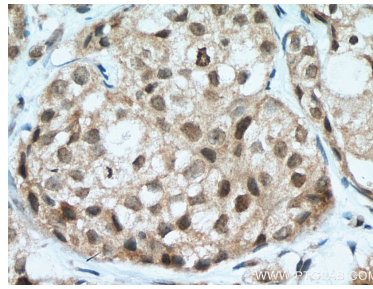
W: ptgcn.com

This product is exclusively available under Proteintech Group brand and is not available to purchase from any other manufacturer.

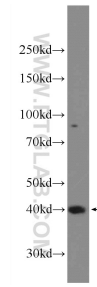
Selected Validation Data



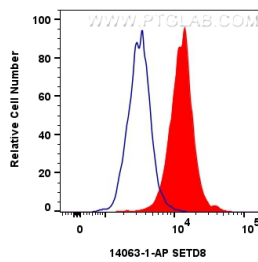
Various lysates were subjected to SDS PAGE followed by western blot with 14063-1-AP (SETD8 antibody) at dilution of 1:2000 incubated at room temperature for 1.5 hours.



Immunohistochemical analysis of paraffin-embedded human breast cancer tissue slide using 14063-1-AP (SETD8 antibody) at dilution of 1:200 (under 40x lens). Heat mediated antigen retrieval with Tris-EDTA buffer (pH 9.0).



RAW 264.7 cells were subjected to SDS PAGE followed by western blot with 14063-1-AP (SETD8 Antibody) at dilution of 1:600 incubated at room temperature for 1.5 hours.



1x10⁶ HEK-293T cells were intracellularly stained with 0.4 ug SETD8 Polyclonal antibody (14063-1-AP) and CoraLite®488-Conjugated Goat Anti-Rabbit IgG(H+L) (SA00013-2)(red), or 0.4 ug Rabbit IgG control Rabbit PolyAb (30000-0-AP) (blue). Cells were fixed and permeabilized with Transcription Factor Staining Buffer Kit (PF00011).