

For Research Use Only

CDC26 Polyclonal antibody

Catalog Number: 14125-1-AP **1 Publications**



Basic Information

Catalog Number: 14125-1-AP	GenBank Accession Number: BC066300	Purification Method: Antigen affinity purification
Size: 2000 µg/ml	GeneID (NCBI): 246184	Recommended Dilutions: WB 1:500-1:2000 IHC 1:20-1:200
Source: Rabbit	UNIPROT ID: Q8NHZ8	
Isotype: IgG	Full Name: cell division cycle 26 homolog (S. cerevisiae)	
Immunogen Catalog Number: AG5276	Calculated MW: 10 kDa	
	Observed MW: 10 kDa	

Applications

Tested Applications: IHC, WB, ELISA	Positive Controls: WB : HeLa cells, IHC : mouse brain tissue,
Cited Applications: IF	
Species Specificity: human, mouse, rat	
Cited Species: human	

Note-IHC: suggested antigen retrieval with TE buffer pH 9.0; (*) Alternatively, antigen retrieval may be performed with citrate buffer pH 6.0

Background Information

CDC26, also named as ANAPC12, APC12 and C9orf17, is a component of the anaphase promoting complex/cyclosome (APC/C). CDC26 can be detected as 14 kDa and ~18 kDa (PMID: 15060174 / PMID: 10222126).

Notable Publications

Author	Pubmed ID	Journal	Application
Kyungsoo Ha	28604711	Nat Commun	IF

Storage

Storage:
Store at -20°C. Stable for one year after shipment.
Storage Buffer:
PBS with 0.02% sodium azide and 50% glycerol pH 7.3.
Aliquoting is unnecessary for -20°C storage

For technical support and original validation data for this product please contact:

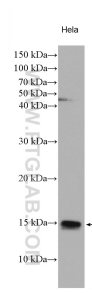
T: 4006900926

E: Proteintech-CN@ptglab.com

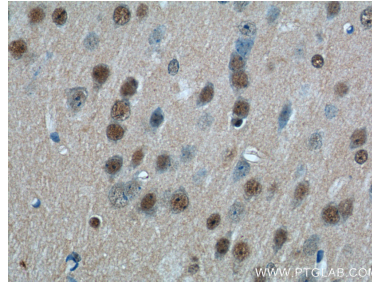
W: ptgcn.com

This product is exclusively available under Proteintech Group brand and is not available to purchase from any other manufacturer.

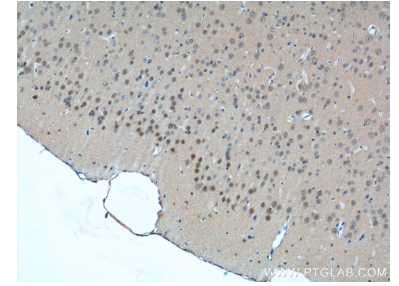
Selected Validation Data



HeLa cells were subjected to SDS PAGE followed by western blot with 14125-1-AP (CDC26 antibody) at dilution of 1:1000 incubated at room temperature for 1.5 hours.



Immunohistochemical analysis of paraffin-embedded mouse brain tissue slide using 14125-1-AP (CDC26 Antibody) at dilution of 1:50 (under 40x lens).



Immunohistochemical analysis of paraffin-embedded mouse brain tissue slide using 14125-1-AP (CDC26 Antibody) at dilution of 1:50 (under 10x lens).