

For Research Use Only

Kir2.2 Polyclonal antibody

Catalog Number:14135-1-AP



Basic Information

Catalog Number:

14135-1-AP

Size:

650 ug/ml

Source:

Rabbit

Isotype:

IgG

Immunogen Catalog Number:

AG5349

GenBank Accession Number:

BC027982

GeneID (NCBI):

3768

UNIPROT ID:

Q14500

Full Name:

potassium inwardly-rectifying channel, subfamily J, member 12

Calculated MW:

433 aa, 49 kDa

Observed MW:

45-50 kDa

Purification Method:

Antigen affinity purification

Recommended Dilutions:

WB 1:500-1:2400

Applications

Tested Applications:

WB, FC (Intra), ELISA

Species Specificity:

human, mouse, rat

Positive Controls:

WB : mouse lung tissue, rat lung tissue

Background Information

Storage

Storage:

Store at -20°C. Stable for one year after shipment.

Storage Buffer:

PBS with 0.02% sodium azide and 50% glycerol pH 7.3.

Aliquoting is unnecessary for -20°C storage

For technical support and original validation data for this product please contact:

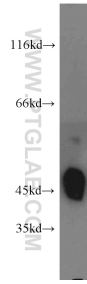
T: 4006900926

E: Proteintech-CN@ptglab.com

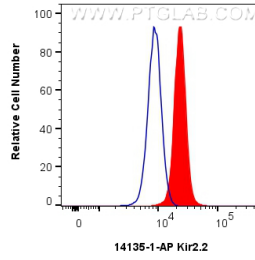
W: ptgcn.com

This product is exclusively available under Proteintech Group brand and is not available to purchase from any other manufacturer.

Selected Validation Data



mouse lung tissue were subjected to SDS PAGE followed by western blot with 14135-1-AP (Kir2.2 antibody) at dilution of 1:1500 incubated at room temperature for 1.5 hours.



1×10^6 HEK-293 cells were intracellularly stained with 0.5 μ g Kir2.2 Polyclonal antibody (14135-1-AP) and CoraLite[®]488-Conjugated Goat Anti-Rabbit IgG(H+L) (SA00013-2)(red), or 0.5 μ g Rabbit IgG control Rabbit PolyAb (30000-0-AP) (blue). Cells were fixed with 4% PFA and permeabilized with Flow Cytometry Perm Buffer (PF00011-C).