

For Research Use Only

# LILRB2 Polyclonal antibody

Catalog Number: 14154-1-AP



## Basic Information

<b>Catalog Number:</b> 14154-1-AP	<b>GenBank Accession Number:</b> BC036827	<b>Purification Method:</b> Antigen affinity purification
<b>Size:</b> 500 ug/ml	<b>GeneID (NCBI):</b> 10288	<b>Recommended Dilutions:</b> WB 1:500-1:3000 IF/ICC 1:50-1:500
<b>Source:</b> Rabbit	<b>UNIPROT ID:</b> Q8N423	
<b>Isotype:</b> IgG	<b>Full Name:</b> Leukocyte immunoglobulin-like receptor, subfamily B (with TM and ITIM domains), member 2	
<b>Immunogen Catalog Number:</b> AG5336	<b>Calculated MW:</b> 598 aa, 65 kDa	
	<b>Observed MW:</b> 60-65 kDa	

## Applications

<b>Tested Applications:</b> WB, IF/ICC, ELISA	<b>Positive Controls:</b>
<b>Species Specificity:</b> human	WB: THP-1 cells, IF/ICC: THP-1 cells,

## Background Information

LILRB2 (Leukocyte immunoglobulin-like receptor subfamily B member 2), also known as ILT4, CD85d or MIR10, is a type I transmembrane glycoprotein that contains four extracellular immunoglobulin domains, a transmembrane domain, and three cytoplasmic immunoreceptor tyrosine-based inhibitory motifs (ITIMs) (PMID: 33928233). LILRB2 is mainly expressed in immunocytes including monocytes, macrophages, and dendritic cells, and transduces negative signals by its association with SHP-1 phosphatase via the ITIMs (PMID: 35717259). LILRB2 can interact with various ligands such as HLA-A, HLA-B, HLA-C, HLA-G, HLA-F, CD1c, CD1d, angiopoietin-like proteins (ANGPTLs), and SEMA4A.

## Storage

**Storage:**  
Store at -20°C. Stable for one year after shipment.  
**Storage Buffer:**  
PBS with 0.02% sodium azide and 50% glycerol pH 7.3.  
Aliquoting is unnecessary for -20°C storage

For technical support and original validation data for this product please contact:

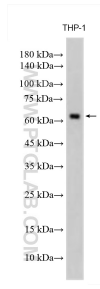
T: 4006900926

E: [Proteintech-CN@ptglab.com](mailto:Proteintech-CN@ptglab.com)

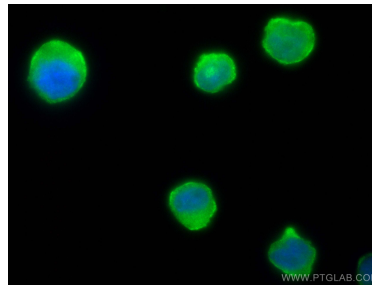
W: [ptgcn.com](http://ptgcn.com)

This product is exclusively available under Proteintech Group brand and is not available to purchase from any other manufacturer.

## Selected Validation Data



THP-1 cells were subjected to SDS PAGE followed by western blot with 14154-1-AP (LILRB2 antibody) at dilution of 1:1500 incubated at room temperature for 1.5 hours.



Immunofluorescent analysis of (4% PFA) fixed THP-1 cells using LILRB2 antibody (14154-1-AP) at dilution of 1:200 and CoraLite®488-Conjugated AffiniPure Goat Anti-Rabbit IgG(H+L) (SA00013-2).