

For Research Use Only

HSD11B2 Polyclonal antibody

Catalog Number: 14192-1-AP **18 Publications**



Basic Information

Catalog Number: 14192-1-AP	GenBank Accession Number: BC036780	Purification Method: Antigen affinity purification
Size: 550 ug/ml	GeneID (NCBI): 3291	Recommended Dilutions: WB 1:1000-1:4000 IHC 1:20-1:200
Source: Rabbit	UNIPROT ID: P80365	
Isotype: IgG	Full Name: hydroxysteroid (11-beta) dehydrogenase 2	
Immunogen Catalog Number: AG5146	Calculated MW: 405 aa, 44 kDa	
	Observed MW: 40-43 kDa	

Applications

Tested Applications: WB, IHC, ELISA	Positive Controls:
Cited Applications: WB, IHC, IF	WB : human placenta tissue, mouse kidney tissue, human kidney tissue, Transfected HEK-293 cells
Species Specificity: human, mouse, rat	IHC : human kidney tissue,
Cited Species: human, mouse, rat, pig	
Note-IHC: suggested antigen retrieval with TE buffer pH 9.0; (*) Alternatively, antigen retrieval may be performed with citrate buffer pH 6.0	

Background Information

The HSD11B2 gene encodes the type II isoform of 11-beta-hydroxysteroid dehydrogenase, a microsomal enzyme complex responsible for the interconversion of biologically active cortisol and inactive cortisone. This protein catalyzes the cortisol-to-cortisone reaction. This protein expresses approximately 44 kDa in placenta, trophoblast, and distal colon, but in kidney tissue, there are two bands of approximately 44 and 48 kDa can be consistently observed and no signal is seen in decidua, adrenal, or liver (PMID:9048640). HSD11B2 protein was detected in CEM-C7 cells via immunoblot analysis as a dimer and trimer of approximately 80 and 120 kDa (PMID:23762608).

Notable Publications

Author	Pubmed ID	Journal	Application
Huiduo Guo	34695613	Ecotoxicol Environ Saf	WB
Yuki Nouchi	36368682	Exp Clin Endocrinol Diabetes	WB
Haodong Chen	34059707	Sci Rep	WB

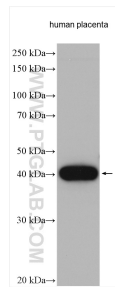
Storage

Storage:
Store at -20°C. Stable for one year after shipment.
Storage Buffer:
PBS with 0.02% sodium azide and 50% glycerol pH 7.3.
Aliquoting is unnecessary for -20°C storage

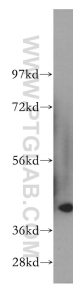
For technical support and original validation data for this product please contact:
T: 4006900926 E: Proteintech-CN@ptglab.com W: ptgcn.com

This product is exclusively available under Proteintech Group brand and is not available to purchase from any other manufacturer.

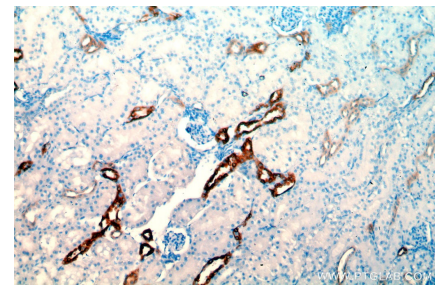
Selected Validation Data



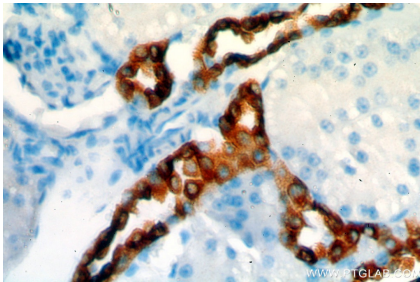
Human placenta tissue lysates were subjected to SDS PAGE followed by western blot with 14192-1-AP (HSD11B2 antibody) at dilution of 1:2000 incubated at room temperature for 1.5 hours.



human kidney tissue were subjected to SDS PAGE followed by western blot with 14192-1-AP (HSD11B2 antibody) at dilution of 1:300 incubated at room temperature for 1.5 hours.



Immunohistochemical analysis of paraffin-embedded human kidney using 14192-1-AP (HSD11B2 antibody) at dilution of 1:50 (under 10x lens).



Immunohistochemical analysis of paraffin-embedded human kidney using 14192-1-AP (HSD11B2 antibody) at dilution of 1:50 (under 40x lens).