

For Research Use Only

# PLCD1 Polyclonal antibody

Catalog Number: 14228-1-AP



## Basic Information

<b>Catalog Number:</b> 14228-1-AP	<b>GenBank Accession Number:</b> BC050382	<b>Purification Method:</b> Antigen affinity purification
<b>Size:</b> 400 µg/ml	<b>GeneID (NCBI):</b> 5333	<b>Recommended Dilutions:</b> WB 1:500-1:1000 IHC 1:50-1:500
<b>Source:</b> Rabbit	<b>UNIPROT ID:</b> P51178	
<b>Isotype:</b> IgG	<b>Full Name:</b> phospholipase C, delta 1	
<b>Immunogen Catalog Number:</b> AG5468	<b>Calculated MW:</b> 86 kDa	
	<b>Observed MW:</b> 85 kDa	

## Applications

### Tested Applications:

IHC, WB, ELISA

### Species Specificity:

human

**Note-IHC: suggested antigen retrieval with TE buffer pH 9.0; (\*) Alternatively, antigen retrieval may be performed with citrate buffer pH 6.0**

### Positive Controls:

WB : human rectum tissue, human brain tissue

IHC : human breast cancer tissue,

## Background Information

### Storage

#### Storage:

Store at -20°C. Stable for one year after shipment.

#### Storage Buffer:

PBS with 0.02% sodium azide and 50% glycerol pH 7.3.

Aliquoting is unnecessary for -20°C storage

For technical support and original validation data for this product please contact:

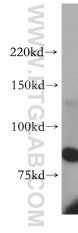
T: 4006900926

E: [Proteintech-CN@ptglab.com](mailto:Proteintech-CN@ptglab.com)

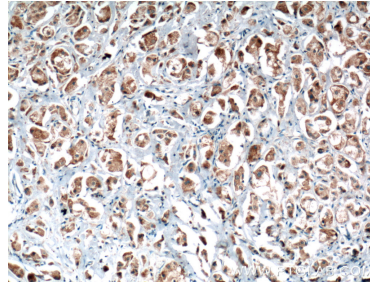
W: [ptgcn.com](http://ptgcn.com)

**This product is exclusively available under Proteintech Group brand and is not available to purchase from any other manufacturer.**

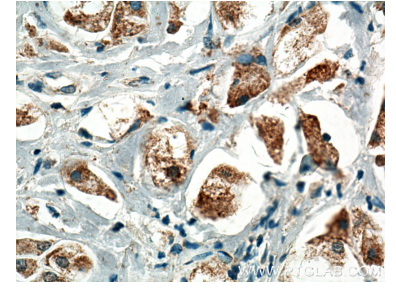
## Selected Validation Data



human rectum tissue were subjected to SDS PAGE followed by western blot with 14228-1-AP (PLCD1 antibody) at dilution of 1:400 incubated at room temperature for 1.5 hours.



Immunohistochemical analysis of paraffin-embedded human breast cancer tissue slide using 14228-1-AP (PLCD1 Antibody) at dilution of 1:200 (under 10x lens). Heat mediated antigen retrieval with Tris-EDTA buffer (pH 9.0).



Immunohistochemical analysis of paraffin-embedded human breast cancer tissue slide using 14228-1-AP (PLCD1 Antibody) at dilution of 1:200 (under 40x lens). Heat mediated antigen retrieval with Tris-EDTA buffer (pH 9.0).