

For Research Use Only

VWA1 Polyclonal antibody

Catalog Number: 14322-1-AP **1 Publications**



Basic Information

Catalog Number: 14322-1-AP	GenBank Accession Number: BC059409	Purification Method: Antigen affinity purification
Size: 500 µg/ml	GeneID (NCBI): 64856	Recommended Dilutions: WB 1:500-1:1000 IHC 1:50-1:500
Source: Rabbit	UNIPROT ID: Q6PCB0	
Isotype: IgG	Full Name: von Willebrand factor A domain containing 1	
Immunogen Catalog Number: AG5565	Calculated MW: 47 kDa	
	Observed MW: 48 kDa	

Applications

Tested Applications: IHC, WB, ELISA	Positive Controls: WB : T-47D cells, IHC : human pancreas cancer tissue,
Cited Applications: WB	
Species Specificity: human	
Cited Species: human	
Note-IHC: suggested antigen retrieval with TE buffer pH 9.0; (*) Alternatively, antigen retrieval may be performed with citrate buffer pH 6.0	

Background Information

VWA1 (also known as WARP) is a member of the von Willebrand factor A-domain (VA-domain) superfamily of extracellular matrix proteins which may play a role in cartilage structure and function (PMID: 12062410). VWA1 is a multimeric component of the chondrocyte pericellular matrix in articular cartilage and intervertebral disc, where it interacts with the basement membrane heparan sulfate proteoglycan perlecan (PMID: 18314316). VWA1 may have a role in maintaining the blood-brain barrier.

Notable Publications

Author	Pubmed ID	Journal	Application
Qin Zou	31281537	Theranostics	WB

Storage

Storage:
Store at -20°C. Stable for one year after shipment.
Storage Buffer:
PBS with 0.02% sodium azide and 50% glycerol pH 7.3.
Aliquoting is unnecessary for -20°C storage

For technical support and original validation data for this product please contact:

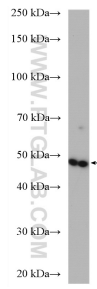
T: 4006900926

E: Proteintech-CN@ptglab.com

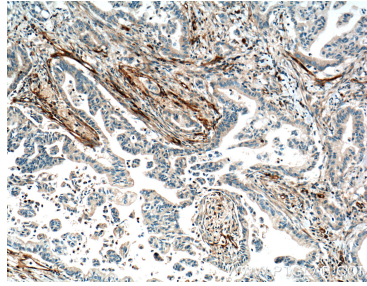
W: ptgcn.com

This product is exclusively available under Proteintech Group brand and is not available to purchase from any other manufacturer.

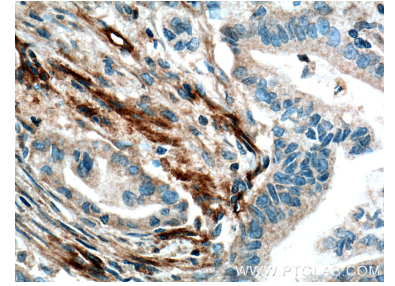
Selected Validation Data



T-47D cells were subjected to SDS PAGE followed by western blot with 14322-1-AP (VWA1 antibody) at dilution of 1:600 incubated at room temperature for 1.5 hours.



Immunohistochemical analysis of paraffin-embedded human pancreas cancer tissue slide using 14322-1-AP (VWA1 Antibody) at dilution of 1:200 (under 10x lens). Heat mediated antigen retrieval with Tris-EDTA buffer (pH 9.0).



Immunohistochemical analysis of paraffin-embedded human pancreas cancer tissue slide using 14322-1-AP (VWA1 Antibody) at dilution of 1:200 (under 40x lens). Heat mediated antigen retrieval with Tris-EDTA buffer (pH 9.0).