

# KDM5C Polyclonal antibody

Catalog Number: 14426-1-AP

4 Publications

## Basic Information

**Catalog Number:**

14426-1-AP

**Size:**

800 µg/ml

**Source:**

Rabbit

**Isotype:**

IgG

**Immunogen Catalog Number:**

AG5791

**GenBank Accession Number:**

BC054499

**GeneID (NCBI):**

8242

**UNIPROT ID:**

P41229

**Full Name:**

lysine (K)-specific demethylase 5C

**Calculated MW:**

176 kDa

**Observed MW:**

171-180 kDa

**Purification Method:**

Antigen affinity purification

**Recommended Dilutions:**

WB 1:1000-1:5000

IF 1:50-1:500

## Applications

**Tested Applications:**

IF/ICC, WB, ELISA

**Cited Applications:**

IF, WB

**Species Specificity:**

human, mouse, rat

**Cited Species:**

human, mouse

**Positive Controls:**

WB : HeLa cells, Jurkat cells, MCF-7 cells

IF : HeLa cells,

## Background Information

KDM5C belongs to the ARID protein family that harbors conserved DNA-binding motifs and acts as a histone H3 lysine 4 demethylase, suggesting a potential role in epigenetic regulation during development, cell differentiation (PMID:21575681). KDM5C protein is homologous to three other proteins of the human JARID1 family (JARID1A, JARID1B and JARID1C). This family shares several evolutionarily conserved domains, including the catalytic JmjC domain, JmjN domain, Arid/Bright domain, C5HC2 zinc-finger domain and two plant homeodomains (PHD), a motif that binds methyl-lysine residues (PMID:17320160,17320161).

## Notable Publications

Author	Pubmed ID	Journal	Application
Shi-Ting Li	32694775	Nat Metab	WB
Wenxia Xu	29989047	Int J Biol Sci	WB
Anna K Kania	34880105	Immunohorizons	WB

## Storage

**Storage:**

Store at -20°C. Stable for one year after shipment.

**Storage Buffer:**

PBS with 0.02% sodium azide and 50% glycerol pH 7.3.

Aliquoting is unnecessary for -20°C storage

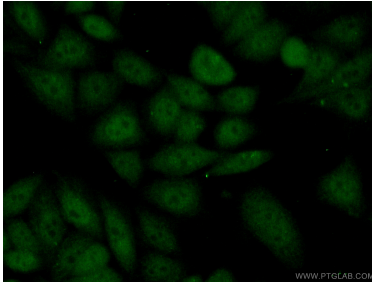
For technical support and original validation data for this product please contact:

T: 4006900926

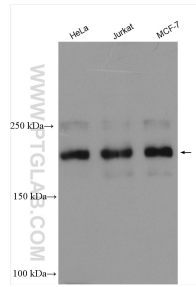
E: [Proteintech-CN@ptglab.com](mailto:Proteintech-CN@ptglab.com)W: [ptgcn.com](http://ptgcn.com)

This product is exclusively available under Proteintech Group brand and is not available to purchase from any other manufacturer.

## Selected Validation Data



Immunofluorescent analysis of (10% Formaldehyde) fixed HeLa cells using 14426-1-AP (KDM5C antibody) at dilution of 1:50 and Alexa Fluor 488-conjugated AffiniPure Goat Anti-Rabbit IgG(H+L).



Various lysates were subjected to SDS PAGE followed by western blot with 14426-1-AP (KDM5C antibody) at dilution of 1:2500 incubated at room temperature for 1.5 hours.