

For Research Use Only

# PPME1 Polyclonal antibody

Catalog Number: 14435-1-AP

2 Publications



## Basic Information

**Catalog Number:**

14435-1-AP

**Size:**

267 µg/ml

**Source:**

Rabbit

**Isotype:**

IgG

**Immunogen Catalog Number:**

AG5817

**GenBank Accession Number:**

BC050705

**GeneID (NCBI):**

51400

**UNIPROT ID:**

Q9Y570

**Full Name:**

protein phosphatase methyltransferase

1

**Calculated MW:**

42 kDa

**Observed MW:**

44 kDa

**Purification Method:**

Antigen affinity purification

**Recommended Dilutions:**

WB 1:500-1:3000

IHC 1:50-1:500

## Applications

**Tested Applications:**

WB, IHC, ELISA

**Cited Applications:**

WB

**Species Specificity:**

human, mouse, rat

**Cited Species:**

human

**Note-IHC: suggested antigen retrieval with TE buffer pH 9.0; (\*) Alternatively, antigen retrieval may be performed with citrate buffer pH 6.0**

**Positive Controls:**

**WB:** HeLa cells, mouse brain tissue, human brain tissue, fetal human brain tissue, A549 cells, rat brain tissue

**IHC:** mouse brain tissue, mouse testis tissue

## Background Information

### Notable Publications

Author	Pubmed ID	Journal	Application
Xiaowen Bi	33603756	Front Immunol	WB
Jing Yao	39254567	Neural Regen Res	WB

## Storage

**Storage:**

Store at -20°C. Stable for one year after shipment.

**Storage Buffer:**

PBS with 0.02% sodium azide and 50% glycerol pH 7.3.

Aliquoting is unnecessary for -20°C storage

For technical support and original validation data for this product please contact:

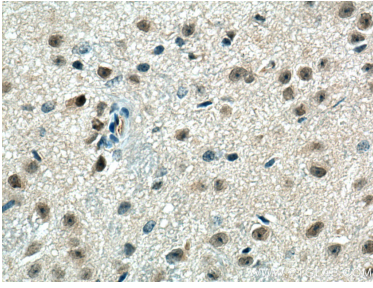
T: 4006900926

E: Proteintech-CN@ptglab.com

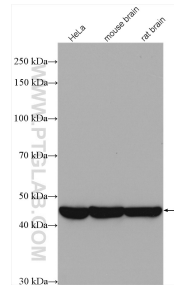
W: ptgcn.com

**This product is exclusively available under Proteintech Group brand and is not available to purchase from any other manufacturer.**

## Selected Validation Data



Immunohistochemical analysis of paraffin-embedded mouse brain tissue slide using 14435-1-AP (PPME1 antibody) at dilution of 1:200 (under 40x lens). Heat mediated antigen retrieval with Tris-EDTA buffer (pH 9.0).



Various lysates were subjected to SDS PAGE followed by western blot with 14435-1-AP (PPME1 antibody) at dilution of 1:1000 incubated at room temperature for 1.5 hours.