

For Research Use Only

# GSTM5 Polyclonal antibody

Catalog Number:14502-1-AP

Featured Product

4 Publications



## Basic Information

**Catalog Number:**

14502-1-AP

**Size:**

700 ug/ml

**Source:**

Rabbit

**Isotype:**

IgG

**Immunogen Catalog Number:**

AG5958

**GenBank Accession Number:**

BC058881

**GeneID (NCBI):**

2949

**UNIPROT ID:**

P46439

**Full Name:**

glutathione S-transferase mu 5

**Calculated MW:**

26 kDa

**Observed MW:**

26 kDa

**Purification Method:**

Antigen affinity purification

**Recommended Dilutions:**

WB 1:2000-1:12000

IP 0.5-4.0 ug for 1.0-3.0 mg of total protein lysate

IHC 1:20-1:200

IF/ICC 1:20-1:200

## Applications

**Tested Applications:**

WB, IHC, IF/ICC, IP, ELISA

**Cited Applications:**

WB, IHC, IF

**Species Specificity:**

human, mouse, rat

**Cited Species:**

human, mouse, rat

**Note-IHC: suggested antigen retrieval with TE buffer pH 9.0; (\*) Alternatively, antigen retrieval may be performed with citrate buffer pH 6.0**

**Positive Controls:**

**WB :** HeLa cells, rat skeletal muscle tissue, mouse testis

**IP :** mouse skeletal muscle tissue,

**IHC :** human heart tissue,

**IF/ICC :** HepG2 cells,

## Background Information

GSTM5 belongs to the GST superfamily that metabolizes a broad range of xenobiotics and carcinogens. GSTM5 is expressed in brain, testis, lung and a lesser extent in heart.

## Notable Publications

Author	Pubmed ID	Journal	Application
Linlin Yang	35830924	J Proteomics	WB
Takayuki Nakajima	26342941	J Neurol Sci	WB, IHC, IF
Yunyi Nan	38702323	Cell Death Discov	WB,IHC,IF

## Storage

**Storage:**

Store at -20°C. Stable for one year after shipment.

**Storage Buffer:**

PBS with 0.02% sodium azide and 50% glycerol pH 7.3.

Aliquoting is unnecessary for -20°C storage

For technical support and original validation data for this product please contact:

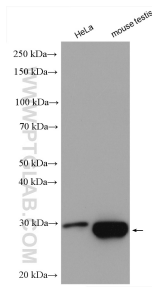
T: 4006900926

E: Proteintech-CN@ptglab.com

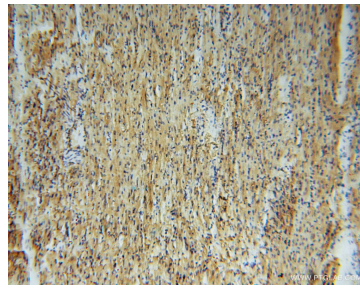
W: ptgcn.com

**This product is exclusively available under Proteintech Group brand and is not available to purchase from any other manufacturer.**

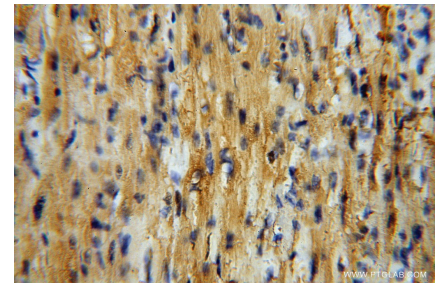
## Selected Validation Data



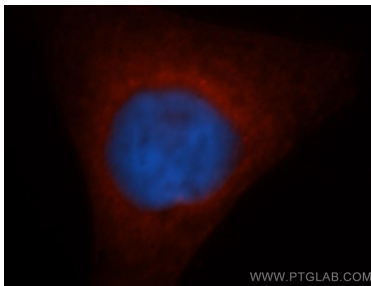
Various lysates were subjected to SDS PAGE followed by western blot with 14502-1-AP (GSTM5 antibody) at dilution of 1:6000 incubated at room temperature for 1.5 hours.



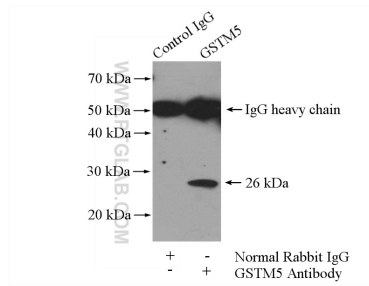
Immunohistochemical analysis of paraffin-embedded human heart using 14502-1-AP (GSTM5 antibody) at dilution of 1:50 (under 10x lens).



Immunohistochemical analysis of paraffin-embedded human heart using 14502-1-AP (GSTM5 antibody) at dilution of 1:50 (under 40x lens).



Immunofluorescent analysis of HepG2 cells, using GSTM5 antibody 14502-1-AP at 1:50 dilution and Rhodamine-labeled goat anti-rabbit IgG (red). Blue pseudocolor = DAPI (fluorescent DNA dye).



IP result of anti-GSTM5 (IP:14502-1-AP, 4ug; Detection:14502-1-AP 1:600) with mouse skeletal muscle tissue lysate 4000ug.