

For Research Use Only

CROP Polyclonal antibody, PBS Only

Catalog Number: 14504-1-PBS

Featured Product



Basic Information

Catalog Number:

14504-1-PBS

Size:

1 mg/ml

Source:

Rabbit

Isotype:

IgG

Immunogen Catalog Number:

AG5961

GenBank Accession Number:

BC056409

GeneID (NCBI):

51747

UNIPROT ID:

O95232

Full Name:

cisplatin resistance-associated overexpressed protein

Calculated MW:

51 kDa

Observed MW:

55-58 kDa

Purification Method:

Antigen affinity purification

Applications

Tested Applications:

WB, IHC, IF/ICC, IP, Indirect ELISA

Species Specificity:

human, mouse

Background Information

CROP, a putative SR protein, contain cystine/histidine motifs and leucine zipper-like repeats in the N-terminal half and consists mostly of charged and polar amino acids in the C-terminal half. CROP has a high expression in heart, brain, pancreas, thymus, and weak in lung, liver and kidney. As the human homologue of yeast Luc7p, CROP is supported to be participated in 5'-splice site recognize and is essential for vegetative growth. This is a rabbit polyclonal antibody raised against part of N-terminus of CROP of human origin, and can recognize a ~58kDa band of CROP.

Storage

Storage:

Store at -80°C.

The product is shipped with ice packs. Upon receipt, store it immediately at -80°C

Storage Buffer:

PBS Only

For technical support and original validation data for this product please contact:

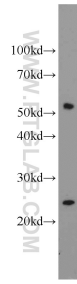
T: 4006900926

E: Proteintech-CN@ptglab.com

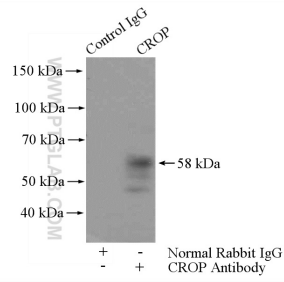
W: ptgcn.com

This product is exclusively available under Proteintech Group brand and is not available to purchase from any other manufacturer.

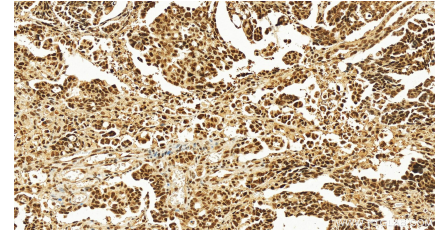
Selected Validation Data



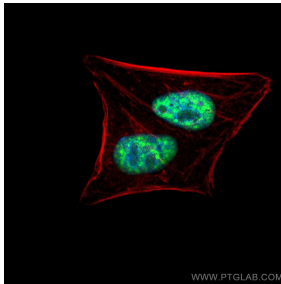
Jurkat cells were subjected to SDS PAGE followed by western blot with 14504-1-AP (CROP antibody) at dilution of 1:600 incubated at room temperature for 1.5 hours. This data was developed using the same antibody clone with 14504-1-PBS in a different storage buffer formulation.



IP result of anti-CROP (IP:14504-1-AP, 4ug; Detection:14504-1-AP 1:500) with HepG2 cells lysate 3600ug. This data was developed using the same antibody clone with 14504-1-PBS in a different storage buffer formulation.



Immunohistochemical analysis of paraffin-embedded human ovarian cancer slide using 14504-1-AP (CROP antibody) at dilution of 1:400 (under 20x lens). Heat mediated antigen retrieval with Tris-EDTA buffer (pH 9.0). This data was developed using the same antibody clone with 14504-1-PBS in a different storage buffer formulation.



Immunofluorescent analysis of (4% PFA) fixed HepG2 cells using CROP antibody (14504-1-AP) at dilution of 1:200 and Multi-rAb Coralite® Plus 488-Goat Anti-Rabbit Recombinant Secondary Antibody (H+L) (RGAR002), CL594-Phalloidin (red). This data was developed using the same antibody clone with 14504-1-PBS in a different storage buffer formulation.