

For Research Use Only

# RPL12 Polyclonal antibody

Catalog Number: 14536-1-AP **2 Publications**



## Basic Information

<b>Catalog Number:</b> 14536-1-AP	<b>GenBank Accession Number:</b> BC050644	<b>Purification Method:</b> Antigen affinity purification
<b>Size:</b> 245 µg/ml	<b>GeneID (NCBI):</b> 6136	<b>Recommended Dilutions:</b> WB 1:500-1:2000
<b>Source:</b> Rabbit	<b>UNIPROT ID:</b> P30050	
<b>Isotype:</b> IgG	<b>Full Name:</b> ribosomal protein L12	
<b>Immunogen Catalog Number:</b> AG6037	<b>Calculated MW:</b> 18 kDa	
	<b>Observed MW:</b> 21 kDa	

## Applications

<b>Tested Applications:</b> WB, ELISA	<b>Positive Controls:</b> WB : A549 cells, Jurkat cells, HeLa cells
<b>Cited Applications:</b> WB	
<b>Species Specificity:</b> human, mouse, rat	
<b>Cited Species:</b> human	

## Background Information

### Notable Publications

Author	Pubmed ID	Journal	Application
Dhaval Varshney	34815422	Sci Rep	WB
Katharina Haneke	32040547	J Cell Biol	WB

## Storage

**Storage:**  
Store at -20°C. Stable for one year after shipment.  
**Storage Buffer:**  
PBS with 0.02% sodium azide and 50% glycerol pH 7.3.  
**Aliquoting is unnecessary for -20°C storage**

For technical support and original validation data for this product please contact:

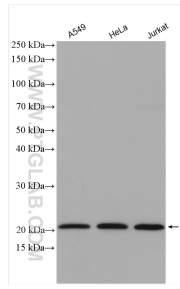
T: 4006900926

E: [Proteintech-CN@ptglab.com](mailto:Proteintech-CN@ptglab.com)

W: [ptgcn.com](http://ptgcn.com)

**This product is exclusively available under Proteintech Group brand and is not available to purchase from any other manufacturer.**

## Selected Validation Data



Various lysates were subjected to SDS PAGE followed by western blot with 14536-1-AP (RPL12 antibody) at dilution of 1:1000 incubated at room temperature for 1.5 hours.