

For Research Use Only

LC3 Polyclonal antibody

Catalog Number: 14600-1-AP

Featured Product

1522 Publications



Basic Information

Catalog Number:

14600-1-AP

Concentration:

600 ug/ml

Source:

Rabbit

Isotype:

IgG

Immunogen Catalog Number:

AG6144

GenBank Accession Number:

BC067797

GeneID (NCBI):

81631

ENSEMBL Gene ID:

ENSG00000140941

UNIPROT ID:

Q9GZQ8

Full Name:

microtubule-associated protein 1
light chain 3 beta

Calculated MW:

15 kDa

Observed MW:

14-18 kDa

Purification Method:

Antigen affinity purification

Recommended Dilutions:

WB: 1:2000-1:8000

IHC: 1:50-1:500

IF/ICC: 1:250-1:1000

FC (Intra): 0.50 ug per 10⁶ cells in a
100 µl suspension

Applications

Tested Applications:

WB, IHC, IF/ICC, FC (Intra), ELISA

Cited Applications:

WB, IHC, IF, IP, CoIP, ELISA

Species Specificity:

human, mouse, rat

Cited Species:

human, mouse, rat, pig, rabbit, monkey, chicken,
zebrafish, sheep, goat

**Note-IHC: suggested antigen retrieval with
TE buffer pH 9.0; (*) Alternatively, antigen
retrieval may be performed with citrate
buffer pH 6.0**

Positive Controls:

WB : HeLa cells, mouse brain tissue, Chloroquine
treated HeLa cells, rat brain tissue

IHC : human liver tissue, human gliomas tissue, mouse
brain tissue

IF/ICC : Chloroquine treated HeLa cells, Chloroquine
treated HepG2 cells

FC (Intra) : HeLa cells,

Background Information

Map1LC3, also known as LC3, is the human homolog of yeast Atg8 and is involved in the formation of autophagosomal vacuoles, called autophagosomes. Three human Map1LC3 isoforms, MAP1LC3A, MAP1LC3B, and MAP1LC3C, undergo post-translational modifications during autophagy. And they differ in their post-translation modifications during autophagy. Map1LC3 also exists in two modified forms, an 18 kDa cytoplasmic form that was originally identified as a subunit of the microtubule-associated protein 1, and a 14-16 kDa form that is associated with the autophagosome membrane. This antibody can cross react with MAP1LC3A, MAP1LC3B, and MAP1LC3C.

Notable Publications

| Author | Pubmed ID | Journal | Application |
|-------------|-----------|---------------------|-------------|
| Huanshan He | 36183753 | Int J Biol Macromol | WB |
| Xin Xu | 36178722 | Environ Toxicol | WB,IF |
| Zeen Zhu | 36248959 | Front Oncol | WB,IF,IHC |

Storage

Storage:

Store at -20°C. Stable for one year after shipment.

Storage Buffer:

PBS with 0.02% sodium azide and 50% glycerol, pH7.3

Aliquoting is unnecessary for -20°C storage

For technical support and original validation data for this product please contact:

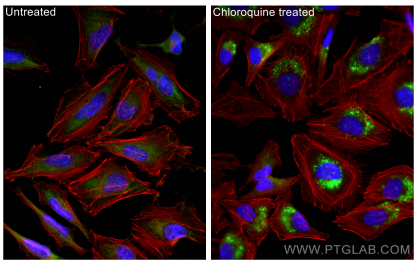
T: 4006900926

E: Proteintech-CN@ptglab.com

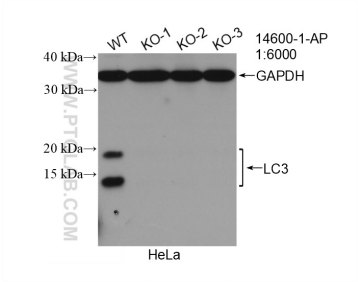
W: ptgcn.com

This product is exclusively available under Proteintech Group brand and is not available to purchase from any other manufacturer.

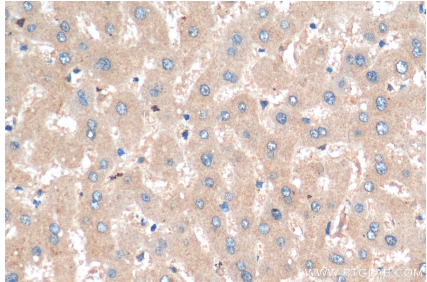
Selected Validation Data



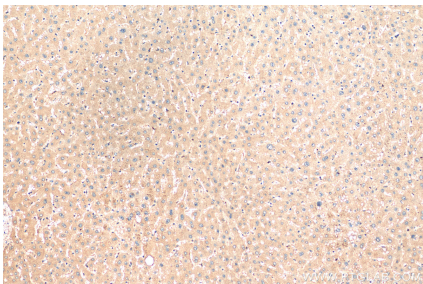
Immunofluorescent analysis of (-20°C Ethanol) fixed Chloroquine treated HeLa cells using LC3 antibody (14600-1-AP) at dilution of 1:500 and CoraLite®488-Conjugated AffiniPure Goat Anti-Rabbit IgG(H+L).



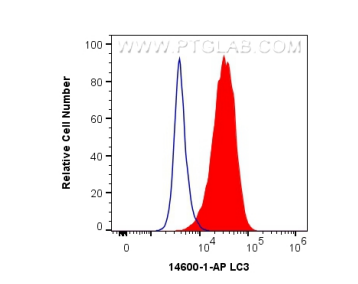
WB result of LC3 antibody (14600-1-AP; 1:6000; room temperature for 1.5 hours) with negative Control and LC3 knockout HeLa cells.



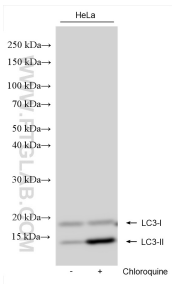
Immunohistochemical analysis of paraffin-embedded human liver tissue slide using 14600-1-AP (LC3 antibody) at dilution of 1:200 (under 10x lens). Heat mediated antigen retrieval with Tris-EDTA buffer (pH 9.0).



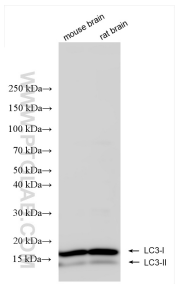
Immunohistochemical analysis of paraffin-embedded human liver tissue slide using 14600-1-AP (LC3 antibody) at dilution of 1:200 (under 40x lens). Heat mediated antigen retrieval with Tris-EDTA buffer (pH 9.0).



1X10⁶ HeLa cells were intracellularly stained with 0.5 ug Anti-Human LC3 (14600-1-AP) and CoraLite®488-Conjugated AffiniPure Goat Anti-Rabbit IgG(H+L) at dilution 1:1000 (red), or 0.5 ug Rabbit IgG control Rabbit PolyAb (30000-O-AP, Clone:) (blue). Cells were fixed with 4% PFA and permeabilized with Flow Cytometry Perm Buffer (PF00011-C).



Non-treated and Chloroquine treated HeLa cells were subjected to SDS PAGE followed by western blot with 14600-1-AP (LC3 antibody) at dilution of 1:8000 incubated at room temperature for 1.5 hours.



Various lysates were subjected to SDS PAGE followed by western blot with 14600-1-AP (LC3 antibody) at dilution of 1:6000 incubated at room temperature for 1.5 hours.